



Capital  
HEIGHTS

*Inspired One, Two, Three & Studio  
Residences in Westlands*

*A New Gem*

  
**Capital**HEIGHTS

Capital Heights, rising gracefully in the heart of Nairobi's most coveted neighbourhood – Westlands, is the latest jewel in our prestigious portfolio of luxury residential apartments.

This visionary development is designed as a serene sanctuary for the modern homeowner who seeks both urban convenience and private elegance. Whether you're immersing yourself in the vibrant pulse of the city or retreating to the calming comfort of home, Capital Heights offers the best of both worlds. Each of our developments is not only a landmark in its locale, but also a high-value asset for discerning investors.

Welcome to your next home – Karibu Nyumbani.



... In our Collection!

  
**Capital**  
RISE



 KILIMANI  2 & 3 BEDROOM

 PROJECT COMPLETE, SOLD OUT & OCCUPIED

  
**Capital**  
GARDEN



 KILIMANI  1, 2 & 3 BEDROOM  FROM 6.8M

 PROJECT ONGOING - SHOWHOUSE READY

# Luxury LIVES HERE!



SCAN TO VIEW  
3D WALKTHROUGH





# A SIGNATURE OF SOPHISTICATION

At Capital Heights, luxury is more than a label; it's a lifestyle woven into every aspect of your living experience. Set within the prestigious Westlands locale, this exclusive address places you at the intersection of urban energy and serene suburban elegance.

Capital Heights offers a value-rich lifestyle in a community where cosmopolitan flair meets contemporary comfort. With effortless access to shopping, dining, international schools, hospitals and corporate hubs - every facet of your day is elevated.

This is not just a home; it's a refined lifestyle curated for every stage of life.

# Inspired LIVING

## Thoughtful, timeless and livable spaces

Capital Heights is an inspired expression of modern architecture and interior elegance; a thoughtfully crafted collection of residences where beauty, functionality, and comfort co-exist effortlessly.

Step into expansive living spaces flooded with natural light, framed by floor-to-ceiling windows and generous balconies that offer a private escape in the sky. Each apartment is finished to perfection: custom-designed kitchens with premium stone countertops, spacious bedrooms that invite rest and rejuvenation, and a palette of finishes that speak to sophisticated taste.

This is where design meets desire. Where your home reflects your lifestyle. Welcome to inspired living.





THE

# Units

At Capital Heights, each unit has been meticulously crafted to meet the diverse needs of today's homeowners. Whether you're a growing family in search of space, a couple seeking a stylish urban sanctuary, a single professional desiring comfort and convenience or an investor looking to launch a lucrative short-stay venture; there's a perfect fit waiting for you.

# Capital HEIGHTS | 3 Bedroom Unit



UNIT TYPE A

180.89 m<sup>2</sup> | 1947.08 ft<sup>2</sup>

- 3 Bedrooms (2 Ensuite)
- Spacious living spaces
- Entrance walkway with storage closet
- Large open kitchen with access to a laundry area
- Large dining area
- Detached Ensuite SQ with separate entrance
- Large master bedroom with walk-in closet



# Capital HEIGHTS | 2 Bedroom Units



SCAN TO VIEW  
3D WALKTHROUGH





## UNIT TYPE B

122.86 m<sup>2</sup> | 1,322.45 ft<sup>2</sup>

- 2 Bedrooms (All Ensuite)
- Spacious living spaces
- Entrance walkway with walkway closet
- Open kitchen
- Large dining area
- Detached Ensuite SQ
- Large master bedroom with walk-in closet
- Laundry area
- Double balcony





## UNIT TYPE C

125.35 m<sup>2</sup> | 1,349.25 ft<sup>2</sup>

- 2 Bedrooms (All Ensuite)
- Spacious living spaces
- Entrance walkway with storage closet
- Open kitchen
- Large dining area
- Detached Ensuite SQ
- Large master bedroom with walk-in closet
- Laundry area
- Double balcony

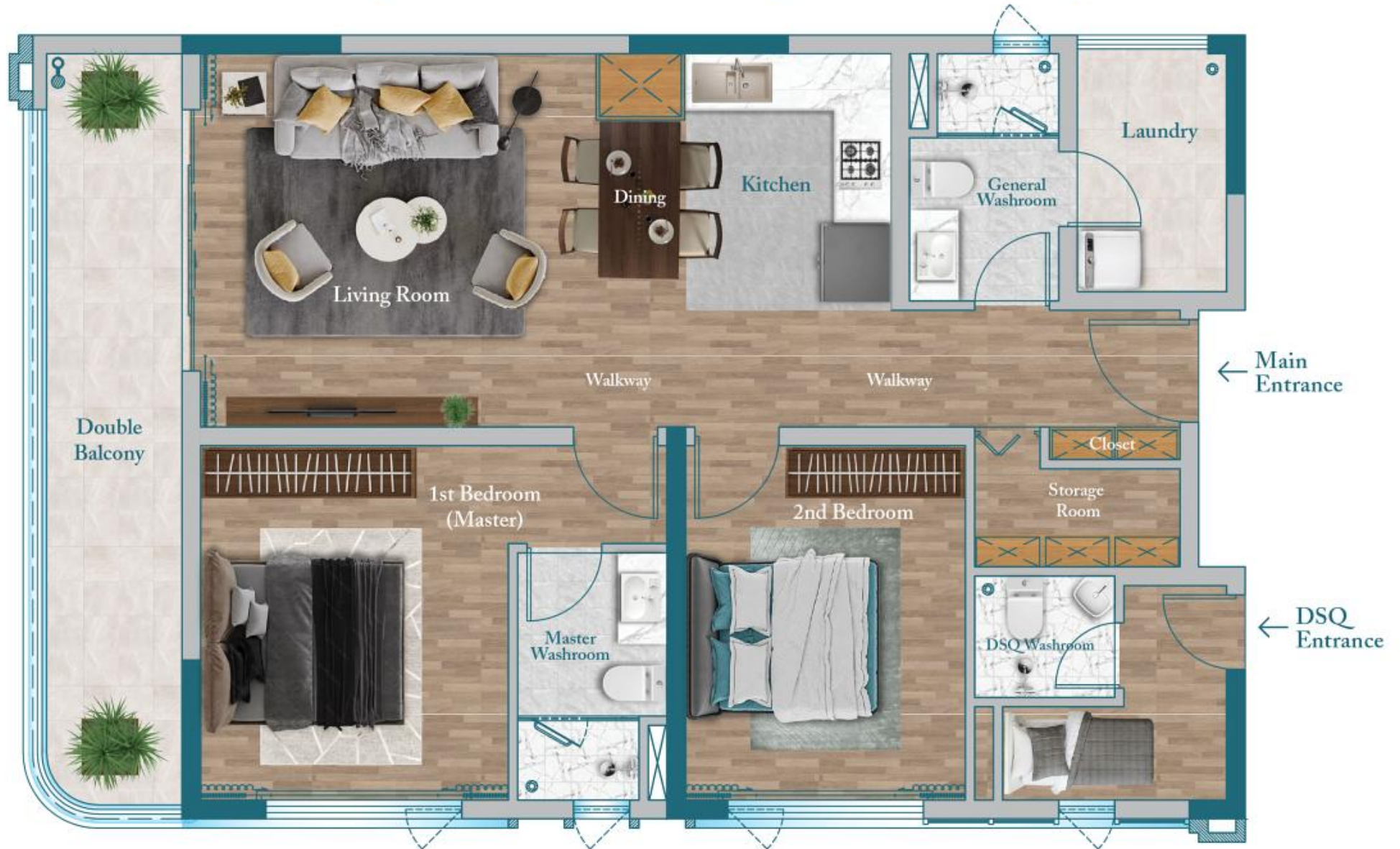




## UNIT TYPE D

129.3 m<sup>2</sup> | 1,391.77 ft<sup>2</sup>

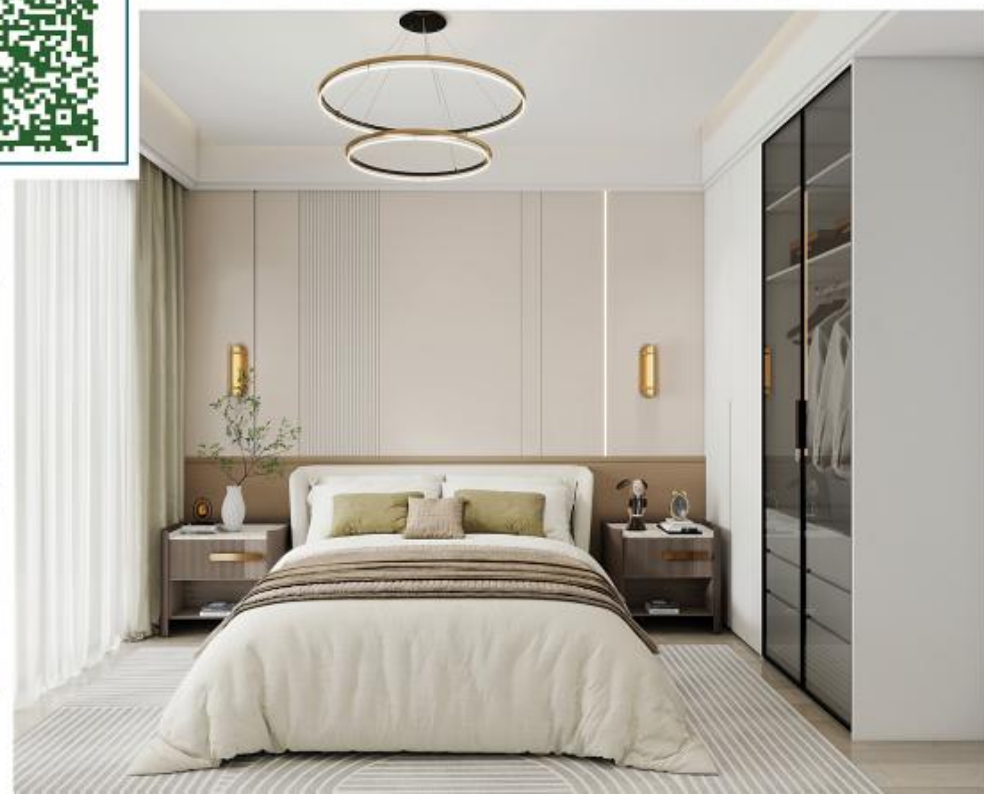
- 2 Bedrooms (1 Ensuite)
- Spacious living spaces
- Entrance walkway with storage closet
- Open kitchen
- Dining area
- Detached Ensuite SQ
- Large master bedroom
- Double balcony
- Laundry



# Capital HEIGHTS | 1 Bedroom Units



SCAN TO VIEW  
3D WALKTHROUGH





## UNIT TYPE E-1

61.32 m<sup>2</sup> | 660.04 ft<sup>2</sup>

- 1 Bedroom
- Spacious living space
- Entrance walkway with walkway storage closet
- Open kitchen
- Kitchen island
- Spacious balcony





## UNIT TYPE E-2

61.32 m<sup>2</sup> | 660.04 ft<sup>2</sup>

- 1 Bedroom
- Spacious living space
- Entrance walkway with walkway storage closet
- Open kitchen
- Kitchen island
- Spacious balcony





## UNIT TYPE F

69.62 m<sup>2</sup> | 749.38 ft<sup>2</sup>

- 1 Bedroom
- Spacious living space
- Entrance walkway with walkway storage closet
- Open kitchen
- Kitchen island
- Double balcony



# Capital HEIGHTS | Luxury Studio Units





STUDIO  
UNITS

- Spacious living space
- Entrance walkway with closet

- Open kitchen
- Spacious bedroom

- Spacious washroom

### UNIT TYPE G

36.11 m<sup>2</sup> | 388.68 ft<sup>2</sup>



### UNIT TYPE G2

36.01 m<sup>2</sup> | 387.61 ft<sup>2</sup>



### UNIT TYPE H

37.06 m<sup>2</sup> | 398.91 ft<sup>2</sup>



# Luxurious

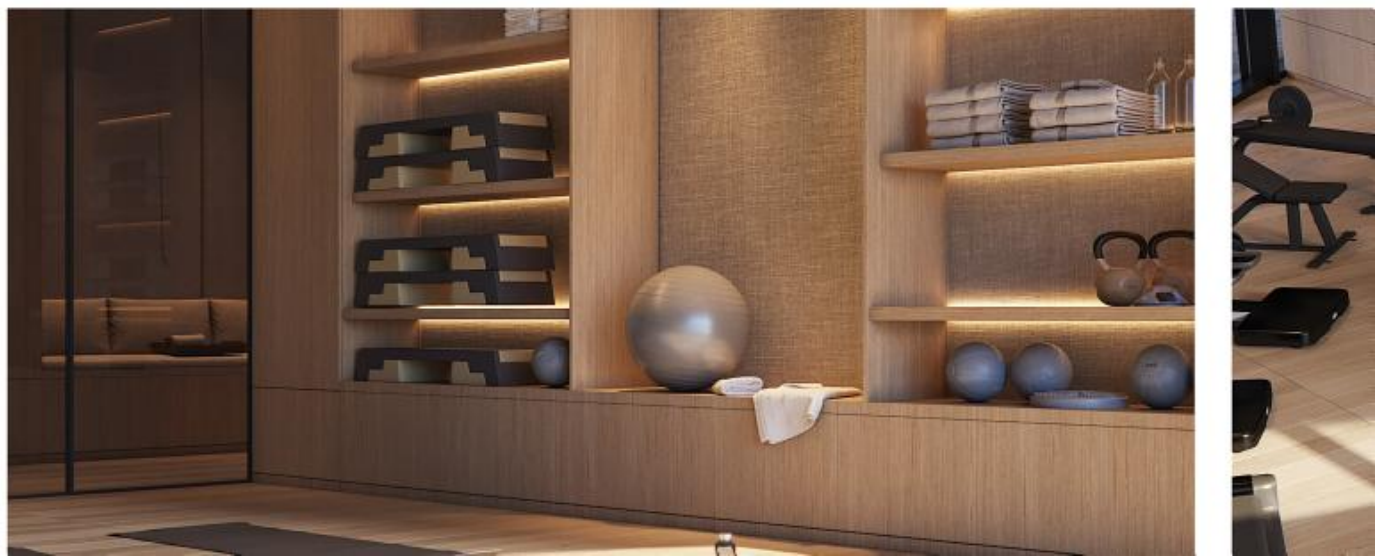
## AMENITIES

Capital Heights delivers an exceptional amenity experience that blends wellness, leisure, and community. Every space has been meticulously curated to support a dynamic and balanced lifestyle; whether you're working remotely, raising a family, entertaining friends or simply unwinding.

Residents enjoy access to a full suite of premium amenities, including:

- Rooftop swimming pool
- Sauna
- Conference center
- Beautiful garden
- Coffee lounge
- Backup generator
- Gym
- Hotel style lobby

Here, your home extends far beyond your front door. This is Capital Heights; a community built around your lifestyle.





# LIVE Connected

## Driving from Capital Heights...

5 minutes to:

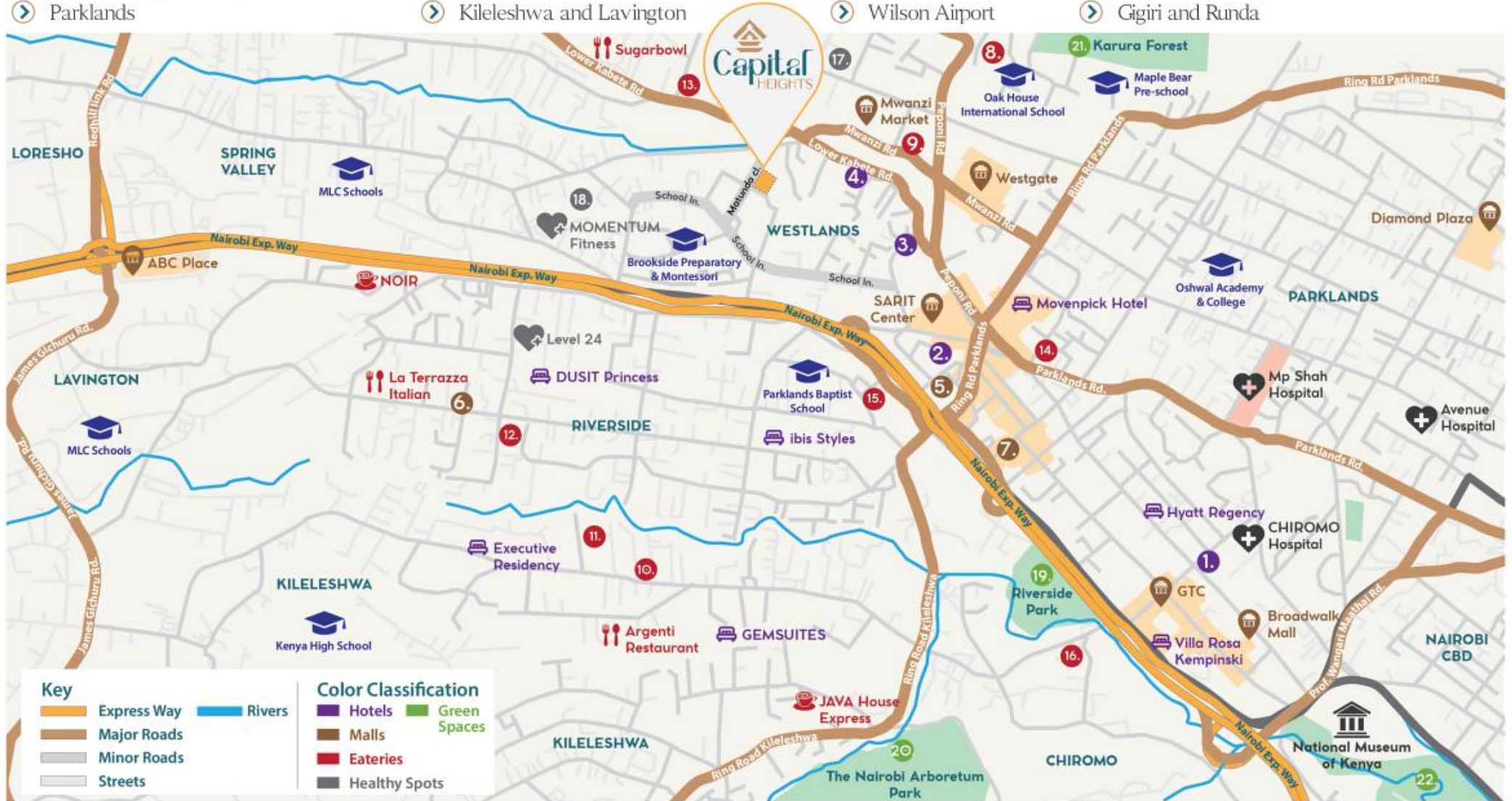
- Nairobi Express Way
- Spring Valley and Peponi
- Parklands

10 - 15 minutes to:

- CBD
- Riverside
- Kileleshwa and Lavington

20 - 30 minutes to:

- JKIA
- SGR Station
- Wilson Airport
- Kilimani
- Upperhill
- Gigiri and Runda



# Discover



## Executive-Luxury Hotels

- ① JW Marriott Nairobi
  - > Movenpick Hotel
- ② Sankara Nairobi
  - > Villa Rosa Kempiski
- ③ Bestwestern Plus
  - > GEMSUITES Riverside
- ④ Novotel Westlands
  - > ibys Styles
  - > DUSIT Princess
  - > Executive Residency

# Savour



## Fine Dining Spots

- ⑧ About Thyme
- ⑨ Mythos Tarvena
  - > Sugarbowl
  - > La Terrazza Italian
- ⑩ Nigasu Shushi
- ⑪ Brioche Restaurant
- ⑫ ArtCaffè Riverside
  - > Argenti Restaurant and Lounge

## Café's

- ⑬ Spring Valley Coffee
- ⑭ Biscotti Café
- ⑮ Café Kaya
  - > NOIR
  - > JAVA House Express
- ⑯ Connect Coffee Riverside

# Explore



## Shopping Malls

- ⑤ Westlands Square
  - > Westgate Mall
  - > Mwanzi Market
  - > Sarit Center
  - > GTC Mall
  - > Broadwalk Mall
- ⑥ The Rhapta Promenade Mall
- ⑦ The Mall - Westlands
  - > ABC Place

# Rejuvenate

## Health Spas & Gyms

- > Level 24
- ⑰ The Burn Club
  - > MOMENTUM Fitness - Rivaan & Westlands Square
- ⑱ Illusion Spa Premier



# Unwind

## Green Spaces & Recreation Parks

- ⑲ Riverside Park
- ⑳ Arboretum Park
- ㉑ Karura Forest
- ㉒ National Museum of Kenya

