



Boutique 1 & 2 Bedroom  
Units - in Kilimani

*A New Gem* .....

Capital  
VISTA

Introducing Capital Vista – the newest jewel in our **signature collection** of **luxury residences** in Nairobi.

Thoughtfully designed with timeless elegance, this boutique development offers exclusively 1 & 2-bedroom residences – perfect for the discerning investor seeking premium rental yields and long-term capital appreciation.

Just like our acclaimed developments – Capital Rise, Capital Garden and Capital Heights – Capital Vista is poised to become a landmark in Kilimani, elevating both its skyline and the investment portfolios of our buyers.

Each project under the **CAPITAL Series** embodies excellence, value and prestige.

*Live iconic. Live Vista.*



.. In our Collection!

**Capital**  
RISE  
— KILIMANI —



 Kilimani  2 & 3 Bedroom

 Project complete, sold out & OCCUPIED

**Capital**  
GARDEN  
— KILIMANI —



 Kilimani  1, 2 & 3 Bedroom

 From 6.8M  Project Ongoing, SHOWHOUSE READY!

**Capital**  
HEIGHTS  
— WESTLANDS —



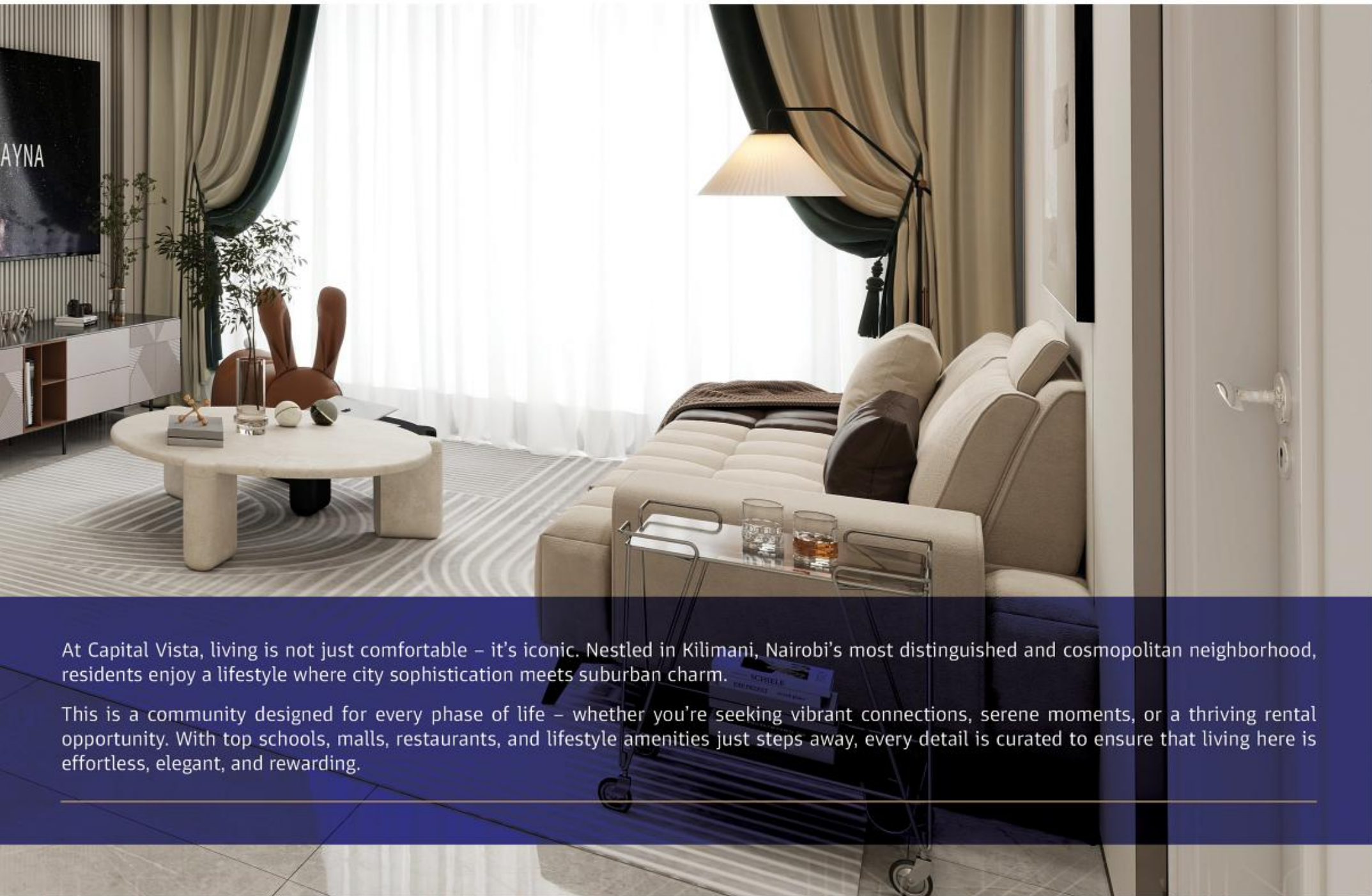
 Westlands  Studio, 1, 2 & 3 Bedroom

 From 4.9M  Project Ongoing, GROUNDBROKEN.



THE PERFECT BLEND

*Of Space & Style*



At Capital Vista, living is not just comfortable – it's iconic. Nestled in Kilimani, Nairobi's most distinguished and cosmopolitan neighborhood, residents enjoy a lifestyle where city sophistication meets suburban charm.

This is a community designed for every phase of life – whether you're seeking vibrant connections, serene moments, or a thriving rental opportunity. With top schools, malls, restaurants, and lifestyle amenities just steps away, every detail is curated to ensure that living here is effortless, elegant, and rewarding.

# The *Units*

*Vista interiors: light, space, and timeless elegance*

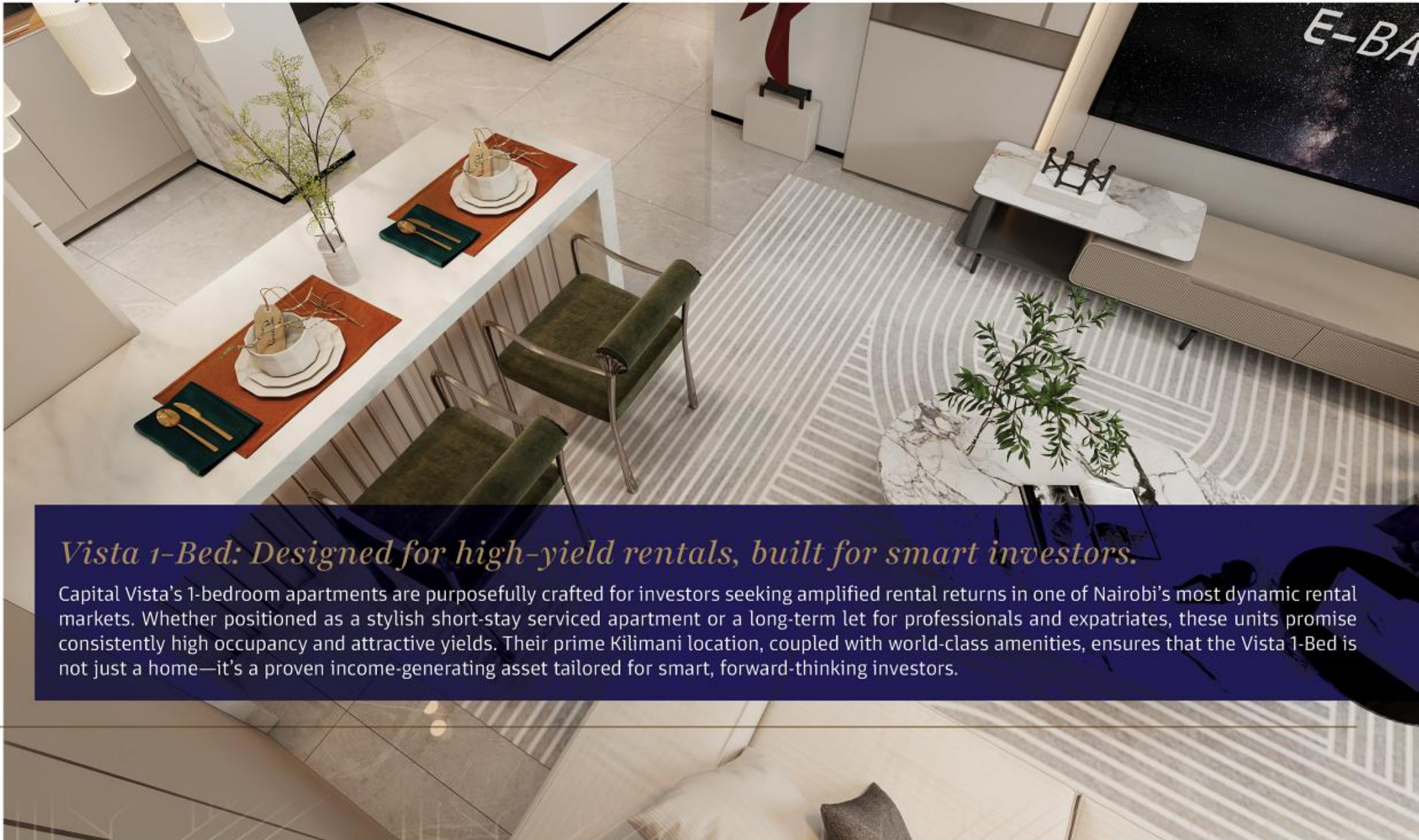
Every home at Capital Vista has been thoughtfully crafted to redefine modern luxury. Expansive windows, high ceilings, and generous balconies flood each residence with natural light, creating bright, airy spaces with a sense of calm.

Interiors are finished to impeccable standards, balancing contemporary design with warm, inviting details. From fully fitted designer kitchens with premium appliances and stone worktops to serene bedrooms that blend comfort with elegance, every inch reflects meticulous craftsmanship.

***Capital Vista isn't just built to be lived in – it's designed to be loved.***

---

## Capital VISTA | 1 Bedroom Units



### *Vista 1-Bed: Designed for high-yield rentals, built for smart investors.*

Capital Vista's 1-bedroom apartments are purposefully crafted for investors seeking amplified rental returns in one of Nairobi's most dynamic rental markets. Whether positioned as a stylish short-stay serviced apartment or a long-term let for professionals and expatriates, these units promise consistently high occupancy and attractive yields. Their prime Kilimani location, coupled with world-class amenities, ensures that the Vista 1-Bed is not just a home—it's a proven income-generating asset tailored for smart, forward-thinking investors.





# Capital VISTA

Unit Type A | 1 Bedroom | 61.43m<sup>2</sup>

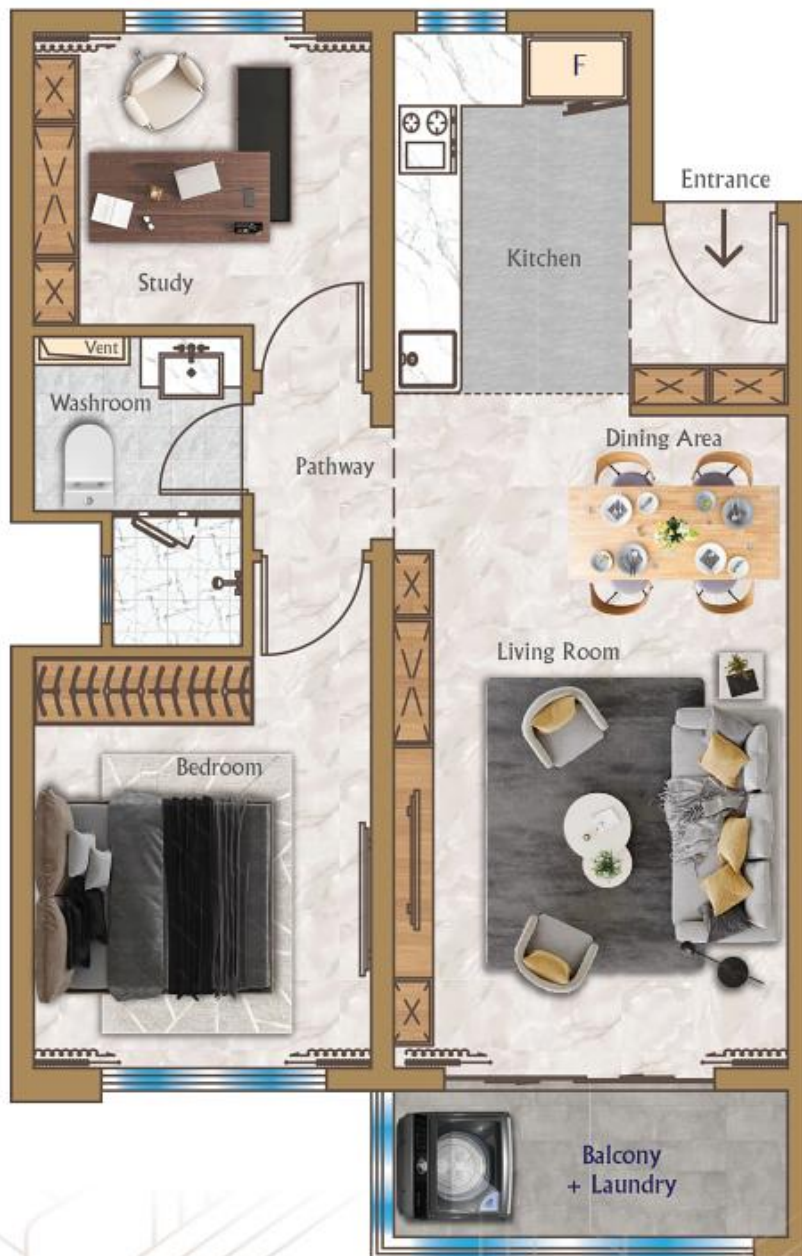
- **1 Bedroom**
- Spacious and well-lit living spaces
- Entrance pathway with storage closet
- Large open kitchen with kitchen island
- Large master bedroom with walk-in closet
- Corridor wash area
- Large washroom
- Large balcony
- Dedicated laundry area



# Capital VISTA

Unit Type B | 1 Bedroom | 63.54m<sup>2</sup>

- **1 Bedroom**
- Spacious and well-lit living spaces
- Entrance pathway with storage closet
- Large open kitchen with kitchen island
- Large master bedroom with walk-in closet
- Large washroom
- Large balcony with allocated laundry area



# Capital VISTA

Unit Type C | 1 Bedroom + Study/DSQ | 83.00m<sup>2</sup>

- **1 Bedroom + Study / DSQ**
- Spacious and well-lit living spaces
- Entrance pathway with storage closet
- Large open kitchen
- Large bedroom
- Large washroom
- Large balcony with allocated laundry area

## Capital VISTA | 2 Bedroom Units



*Own today, appreciate tomorrow – the Vista 2-Bed advantage.*

Capital Vista's 2-bedroom apartments are designed with both lifestyle and legacy in mind. Perfect for young families or couples seeking room to grow, they also represent a high-value asset poised for significant capital appreciation at resale. With spacious layouts, premium finishes, and the prestige of Kilimani's prime address, these residences offer buyers a dual advantage: the joy of contemporary city living today and the promise of long-term financial gain tomorrow.

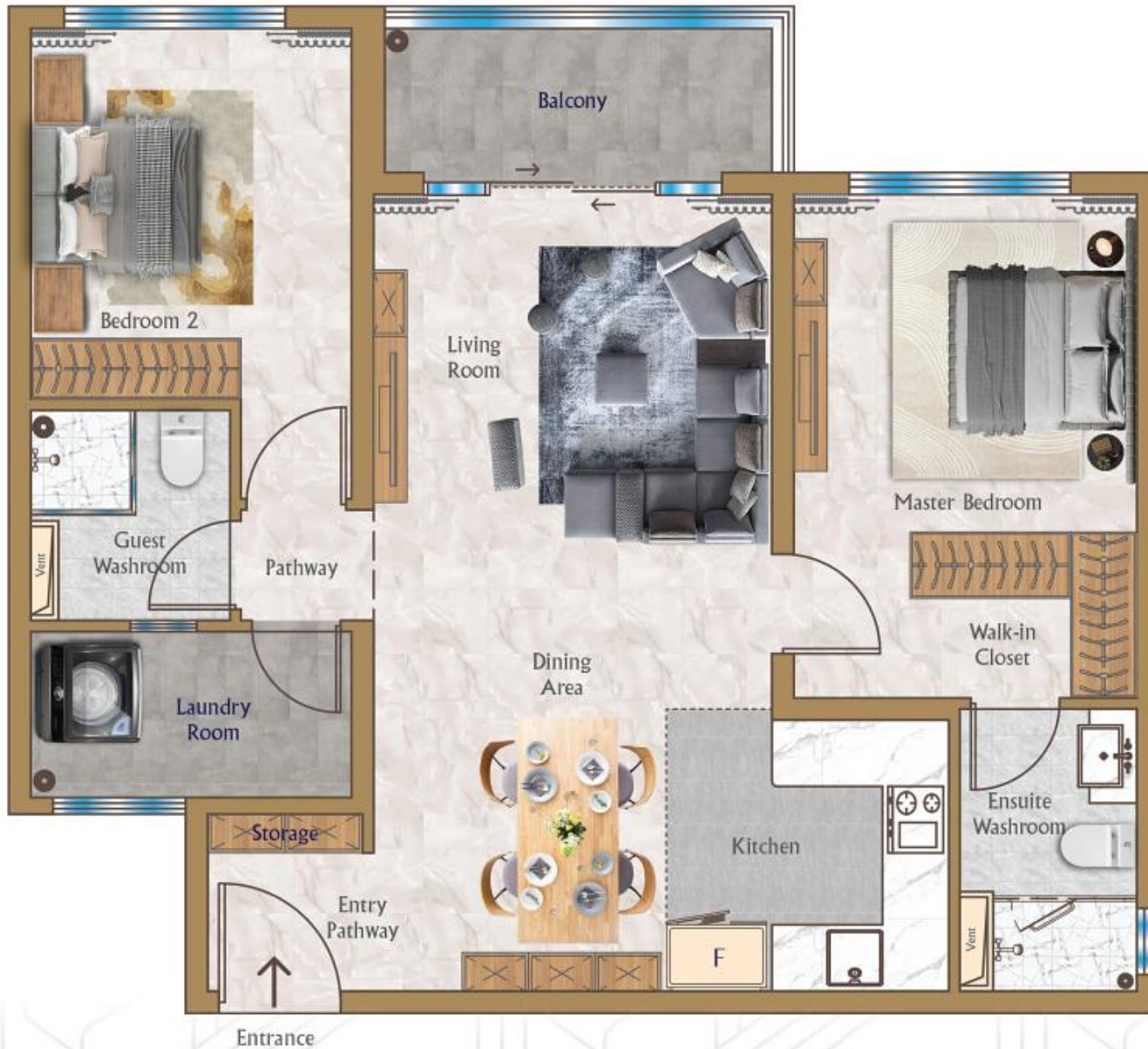




# Capital VISTA

2 Bedroom - Unit Type D | 105.83m<sup>2</sup>

- **2 Bedrooms - 1 En-suite**
- Spacious and well-lit living spaces
- Entrance pathway with storage closet
- Large open kitchen
- Large dedicated dining area
- Corridor washarea
- Large en-suite master bedroom
- Large guest bedroom with balcony
- Large balcony with allocated laundry area



# Capital VISTA

2 Bedroom - Unit Type E1 | 102.78m<sup>2</sup>

- **2 Bedrooms (All En-suite)**
- Spacious and well-lit living spaces
- Entrance pathway with storage closet
- Large open kitchen
- Large dedicated dining area
- Dedicated laundry room
- Large master bedroom with walk-in closet
- Large balcony



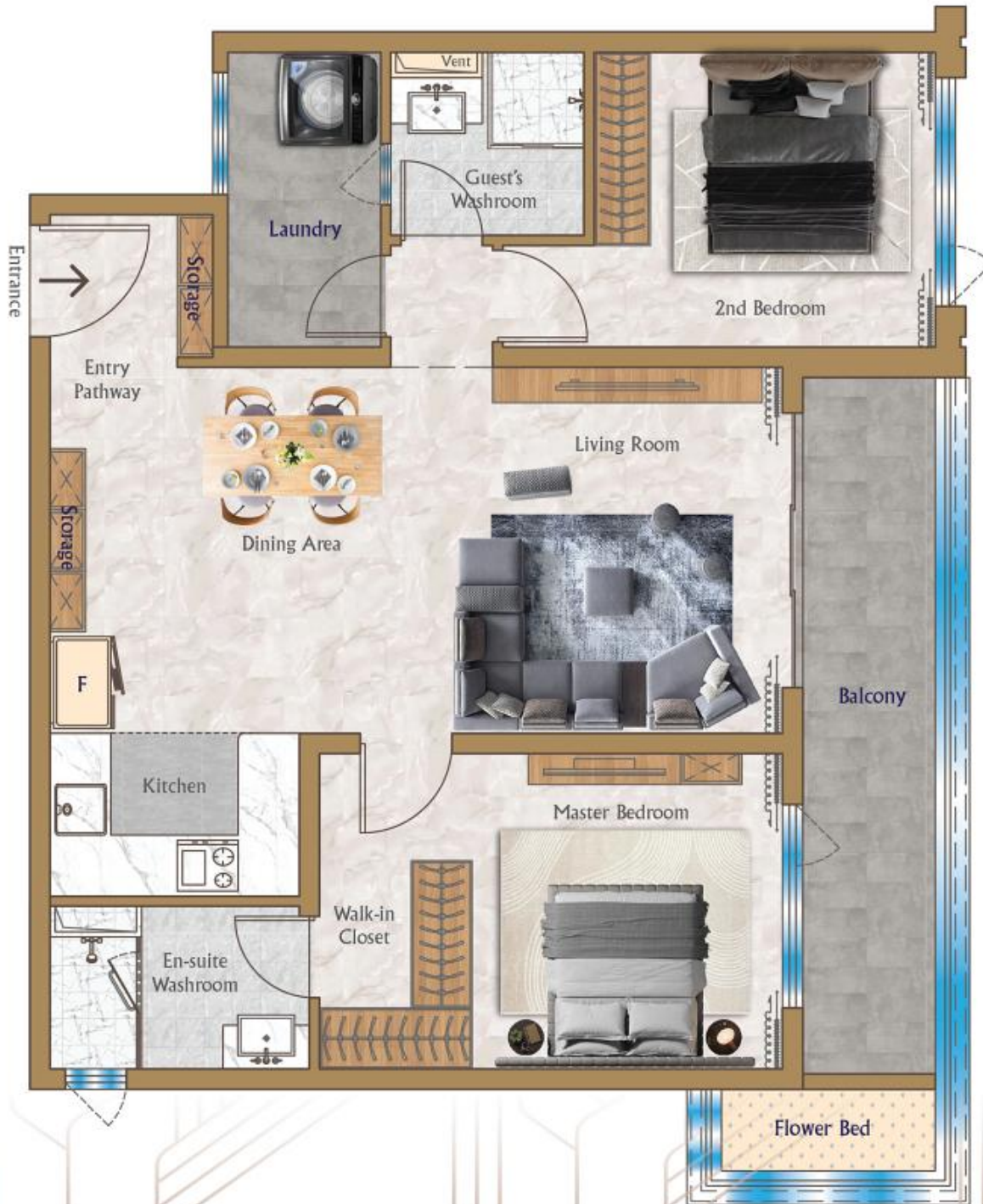
# Capital VISTA

Unit Type E2 | 2 Bedroom | 107.73m<sup>2</sup>

- **2 Bedroom - 1 En-suite**
- Spacious and well-lit living spaces
- Entrance pathway with storage closet
- Large semi-closed kitchen
- Large master bedroom with walk-in closet
- Large washrooms
- Dedicated laundry room
- Double balcony

Unit Type E3 | 2 Bedroom | 110.03m<sup>2</sup>

- **2 Bedroom - 1 En-suite**
- Spacious and well-lit living spaces
- Entrance pathway with storage closet
- Large semi-closed kitchen
- Large master bedroom with walk-in closet
- Large washrooms
- Dedicated laundry room
- Double balcony





The VISTA Amenities Floor

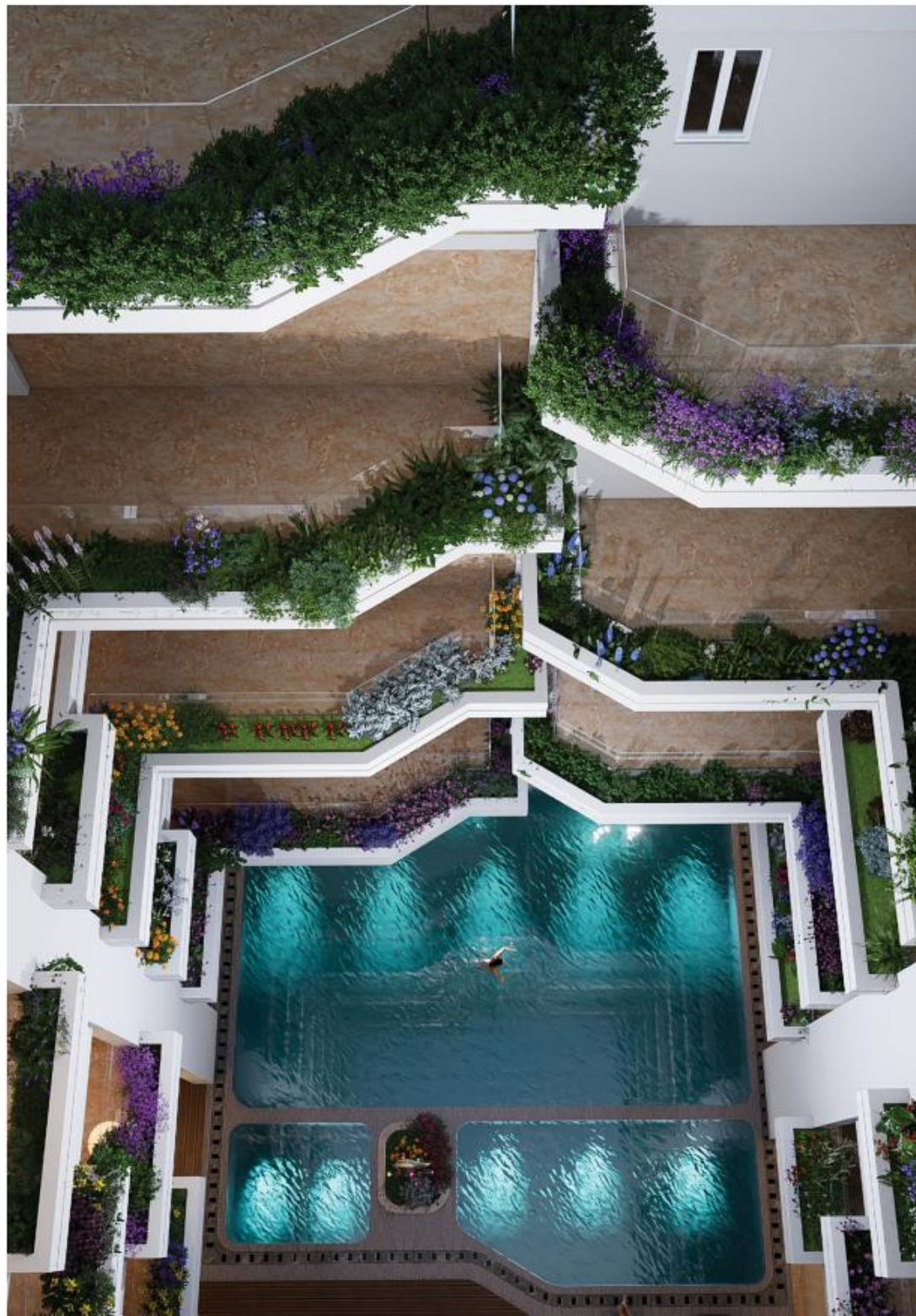
*Amenities that Inspire...*



Life at Capital Vista extends beyond your front door. The entire third floor is dedicated to a **1,300 sqm lifestyle space** – a curated collection of world-class amenities for leisure, fitness and entertainment.

Whether it's unwinding by the pool, hosting friends in the residents' lounge, staying active at the gym, or enjoying children's play areas, Capital Vista offers a living experience that inspires, energizes, and connects.

*Here, every amenity is an extension of your home – and your lifestyle!*





## *Lifestyle Amenities & Facilities*

~ **1,300 sqm of RESIDENT ONLY lifestyle amenities – for leisure, fitness & connection.**

- Heated Swimming Pool
- Fully Equipped Gym
- Steam And Sauna
- Children Play Area
- Yoga Room
- Conference Room
- Gaming Room
- Cafeteria
- Jogging Tracks



# Vista Living!

*Perfectly placed for life and investment.*

Situated in the heart of Kilimani, Capital Vista blends suburban serenity with unmatched city convenience. Just minutes from Nairobi's CBD and well connected to other prime suburbs via major road networks, this is a location that enhances both lifestyle and investment value. Residents enjoy effortless access to Nairobi's best schools, shopping centers, restaurants, hospitals and entertainment destinations – all while living in a neighborhood that continues to grow in prestige and demand.

**Capital Vista places you exactly where you need to be – at the center of it all.**

## Capital Vista is..

### 5 minutes to:

- Lavington
- Kileleshwa
- Upperhill
- Westlands
- Hurlingham

### 10 - 15 minutes to:

- Karen
- Wilson Airport
- Nairobi CBD

### 20 - 30 minutes to:

- Jomo Kenyatta International Airport
- SGR Nairobi terminus
- Parklands

## Within your neighbourhood..

### Food

- Fogo Gaucho
- Oyster Bay
- Crave
- CJ's
- Ankole

### Shopping

- Yaya Center
- Adams Arcade
- Prestige Plaza
- Adlife Plaza
- Greenhouse Mall

### Education

- Kilimani Intl. School
- Light Academy
- Milimani School
- St. Nicholas School
- Daystar University

### Health

- The Nairobi Women's
- Coptic Hospital
- China Oriental Hospital
- Nairobi Hospital
- Kenyatta Hospital

### Worship

- Nairobi Baptist
- Adams Masjid
- AIC Ngong Rd.
- Ethiopian Orthodox
- Masjid Rahma



**Key**

-  Major Roads
-  Street Roads
-  Avenues

-  Restaurants & Eateries
-  Shopping Malls

-  Education Institutions
-  Health Centers

-  Worship Centers