



# HIGHPOINT

— *336 Residences* —



Executive 2 & 3 Bedroom  
Units in KILIMANI





# City Living, re-imagined..

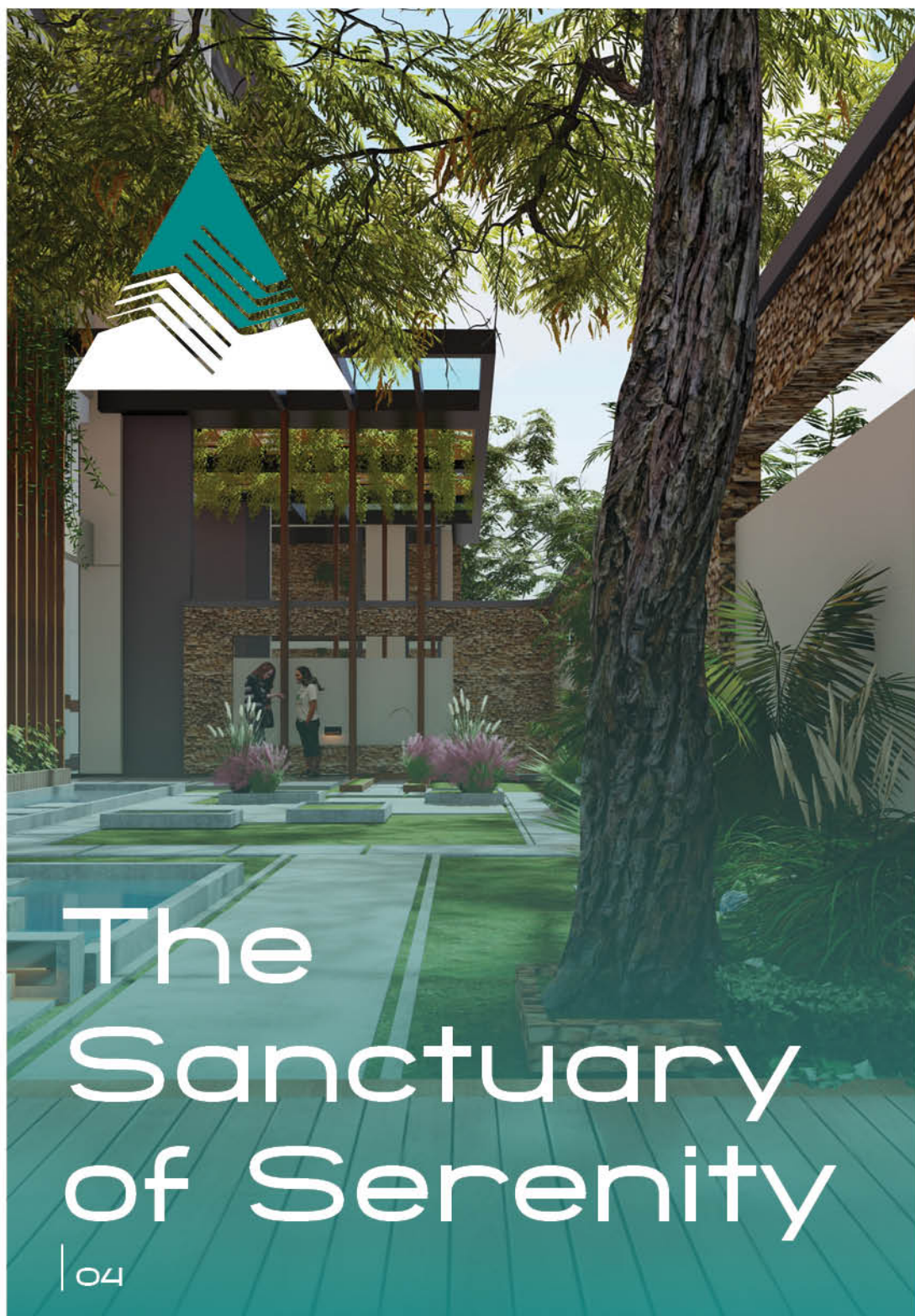
Highpoint 336 is our most prestigious project yet - a bespoke residence with all the amenities of a five-star hotel and the exclusivity of a private member's club.

With its Tier 1 location, outstanding specification and unrivalled amenities, Highpoint 336 embraces Kilimanjaro's charm and character and sets a new benchmark for inner-city living.

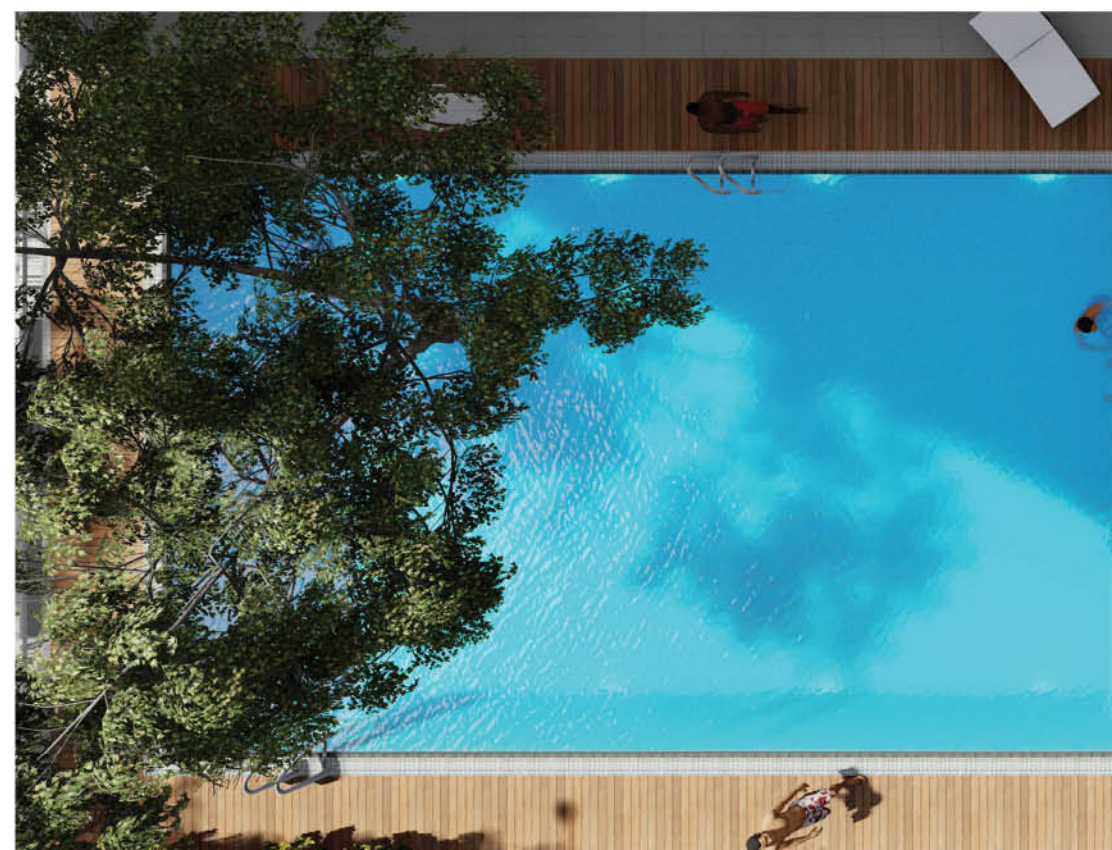
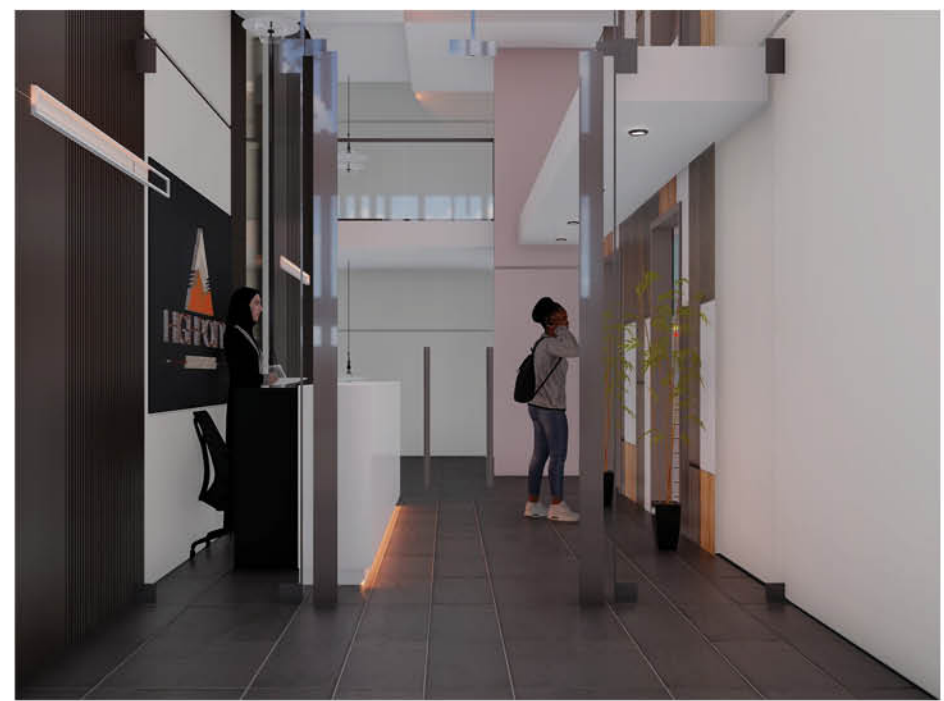
Welcome Home!







# The Sanctuary of Serenity





## Lifestyle Amenities & Facilities

Highpoint 336 resident-only amenities are crafted to fit diverse lifestyles that allow residents to live, love and entertain. They include:

- Heated Swimming Pool
- Garden with Children Play Area
- Fully Equipped GYM
- High Speed Lifts
- 24Hr Security & CCTV System
- Executive Lobby & Reception Area
- Intercom & Internet Connectivity
- Resident's Cafeteria
- Power Backup Generator
- Borehole Water



All images are shown for illustrative purposes only.

N/B:



# Come live the HIGH Life!

The perfect blend  
of space & style!



All images are shown for illustrative purposes only.

N/B:

## Discerning Living

# Contemporary elegance will define each luxurious living space

Highpoint 336's unique geometric form makes a bold and beautiful design statement. Although the same impeccable taste and attention to detail can be felt throughout, each apartment is one of a kind.

Whether 2 or 3-bed, all homes are elegantly proportioned and immaculately finished.

This is the pinnacle of boutique city living.







Everyday begins in comfort and style in your perfectly crafted apartment space. The living areas maximise light and space!



---

Finished to a high specification throughout, all apartments come with spacious balconies, modern kitchens and bathrooms; plus benefit from high quality built-in wardrobes to all bedrooms.





# The UNITS

## Boutique city living!

Highpoint 336 Residences offer a contemporary lifestyle to all discerning investors.

Whether you are a young professional seeking to make your mark by investing in your first real estate asset or you are a young family seeking to purchase your forever home, or even you are an experienced investor expanding your portfolio; You'll find your perfect home with a wide range of apartment units which fits your vision.

---



# Unit Type A

141.21m<sup>2</sup> | 1,519.97 ft<sup>2</sup>

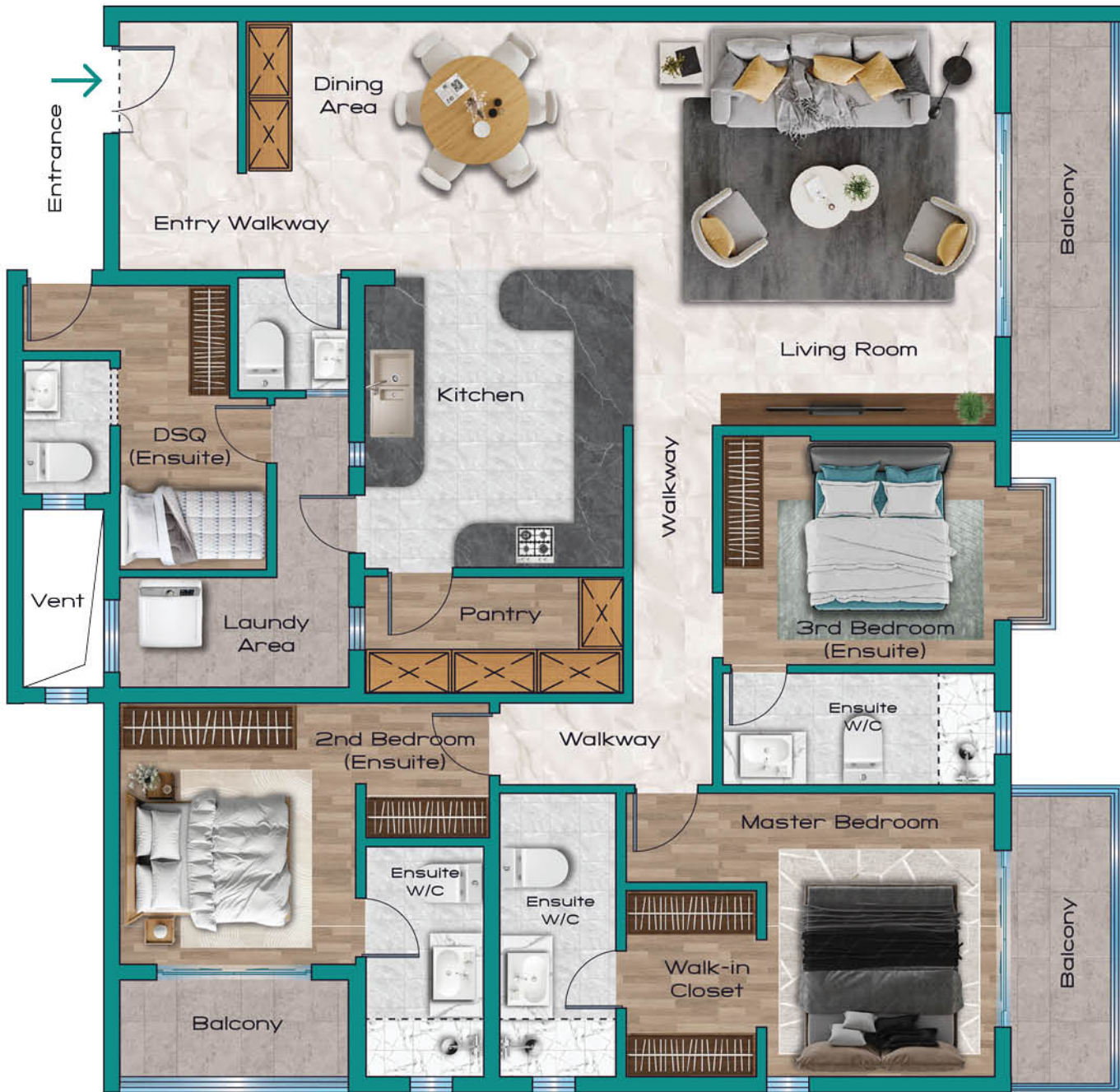
## 3 Bedrooms (All Ensuite)

- Spacious living spaces
- Entry walkway

- Open kitchen
- Dining area
- Large Bedrooms

- Two (2) balconies
- Laundry Area





## Unit Type B

217.1m<sup>2</sup> | 2,336.845 ft<sup>2</sup>

### 3 Bedrooms (All Ensuite)

- Spacious living spaces
- Entry walkway
- Dedicated dining space
- Large closed kitchen with pantry room
- Large en-suite master bedroom with walk-in closet
- Three (3) balconies
- Detached en-suite sq with access to kitchen and laundry area
- Dedicated laundry area



## Unit Type C

99.1 m<sup>2</sup> | 1,066.704 ft<sup>2</sup>

### 2 Bedrooms (Master En-suite)

- Spacious living spaces
- Entry walkway
- Dining space
- Semi-closed kitchen
- General (Guests) Washroom
- Large en-suite master bedroom
- Large Balcony



## Unit Type D

111.17m<sup>2</sup> | 1,196.623 ft<sup>2</sup>

### 2 Bedrooms (Master En-suite)

- Spacious living spaces
- Entry walkway
- Dedicated dining space
- Semi-closed kitchen with pantry room
- Large en-suite master bedroom
- General (Guests) Washroom
- Extended balcony with laundry area

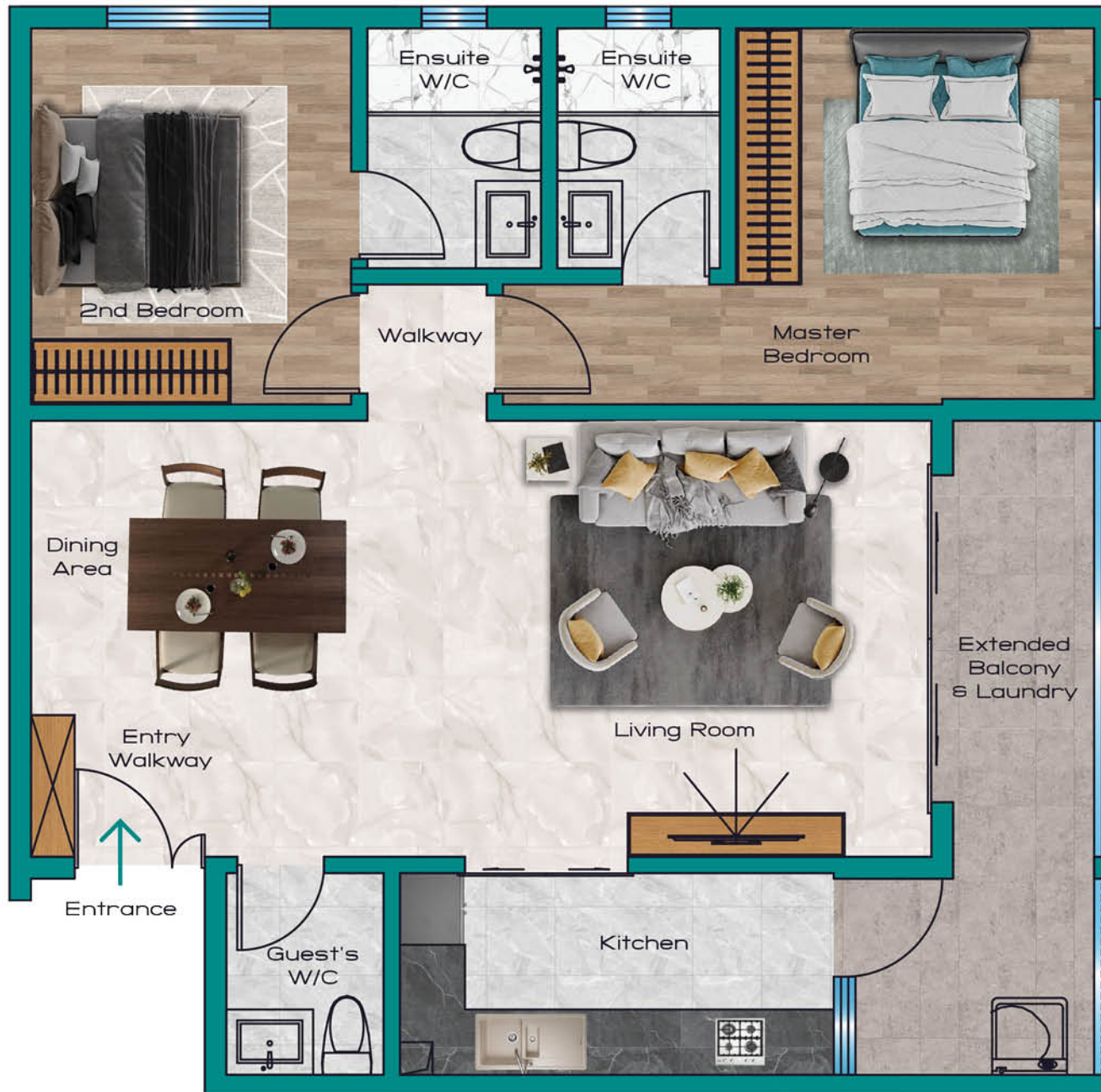


## Unit Type E

107.53 m<sup>2</sup> | 1,157.44 ft<sup>2</sup>

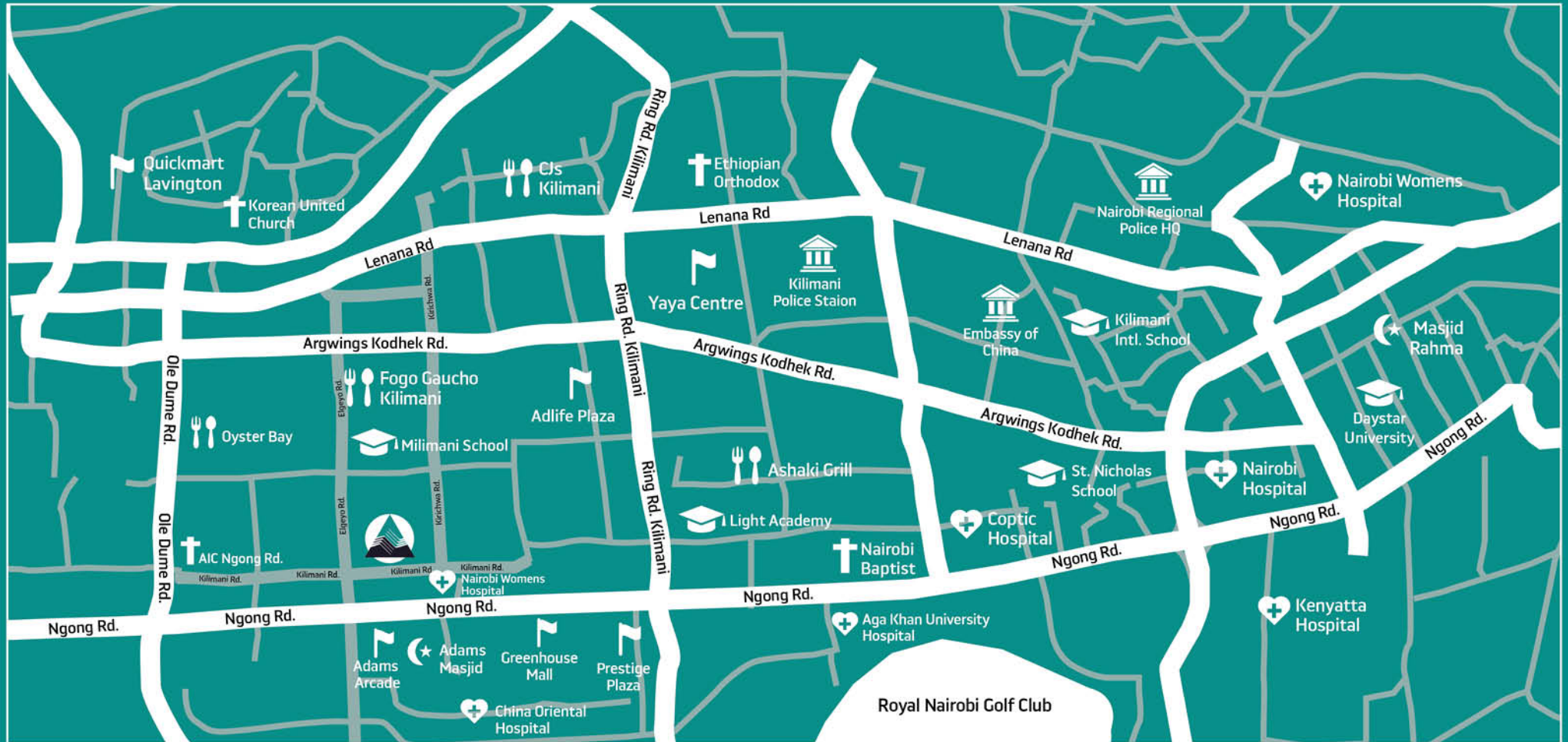
### 2 Bedrooms (Master En-suite)

- Spacious living spaces
- Entry walkway
- Dedicated dining space
- Semi-closed kitchen with pantry room
- Large en-suite master bedroom
- General (Guests) Washroom
- Extended balcony with laundry area



# Brilliantly located & connected

Kilimani has become Nairobi's most sought-out address to live, work and enjoy. Perfectly placed, Highpoint 336 is at the centre of it all!



Highpoint 336

is:

5 minutes to:

- Lavington
- Kileleshwa
- Upperhill
- Westlands
- Hurlingham

10 - 15 minutes to:

- Karen
- Wilson Airport
- Nairobi CBD

20 - 30 minutes to:

- Jomo Kenyatta International Airport
- SGR Nairobi terminus
- Parklands

# A distinctive developer

Highpoint Developers Ltd are a leading Property Group with over 10 Years experience building, selling and managing boutique projects in Kenya. Our past successful projects; delivered on-schedule and fully occupied by happy investors and tenants are beacons in their locales. They include:



**ENZI Heights**  
~ Mombasa Rd.



**CHELEZO Apartments**  
~ Kilimani.



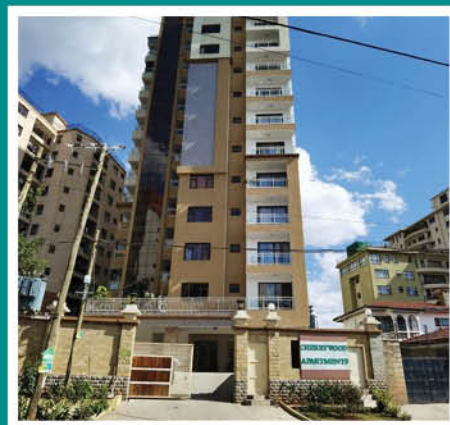
**URBAN PARK**  
~ Mombasa Rd.



**KINGSTONE Residences**  
~ Ngong Rd.



**RIZIKI Apartments**  
~ Kileleshwa



**CHERRYWOOD**  
~ Kilimani.



**MPUUGA Gardens**  
~ Kilimani.



**VILLA Lavendar**  
~ Lavington.

