

FROM THE TEAM THAT BROUGHT YOU
CAPRICORN: THE HEART OF KILIMANI

GEMINI

WHERE THE STARS LIVE

PROJECT OVERVIEW



ROOFTOP
LOUNGE



ROOFTOP
PADEL COURT



COURTYARD
POOL



COURTYARD
GARDEN



CAR
PARKING



ARRIVAL
CONCIERGE



HEATED
ROOFTOP
INFINITY POOL



ROOFTOP
BERBECUE



CO WORK
SPACE



SPA/
SAUNA



COFFEE
SHOP



BALCONY
VIEWS



24/7
SECURITY



FULLY EQUIPED
GYM



YOGA
STUDIO

" TRUE LUXURY IS FOUND
• IN THE DETAILS THAT
ELEVATE YOUR EVERYDAY
LIFE. "

WELCOME, TO A NEW BEGINNING.
YOUR STORY OF REFINED
LIVING STARTS HERE.

G

GEMINI

caffè
GEMINI

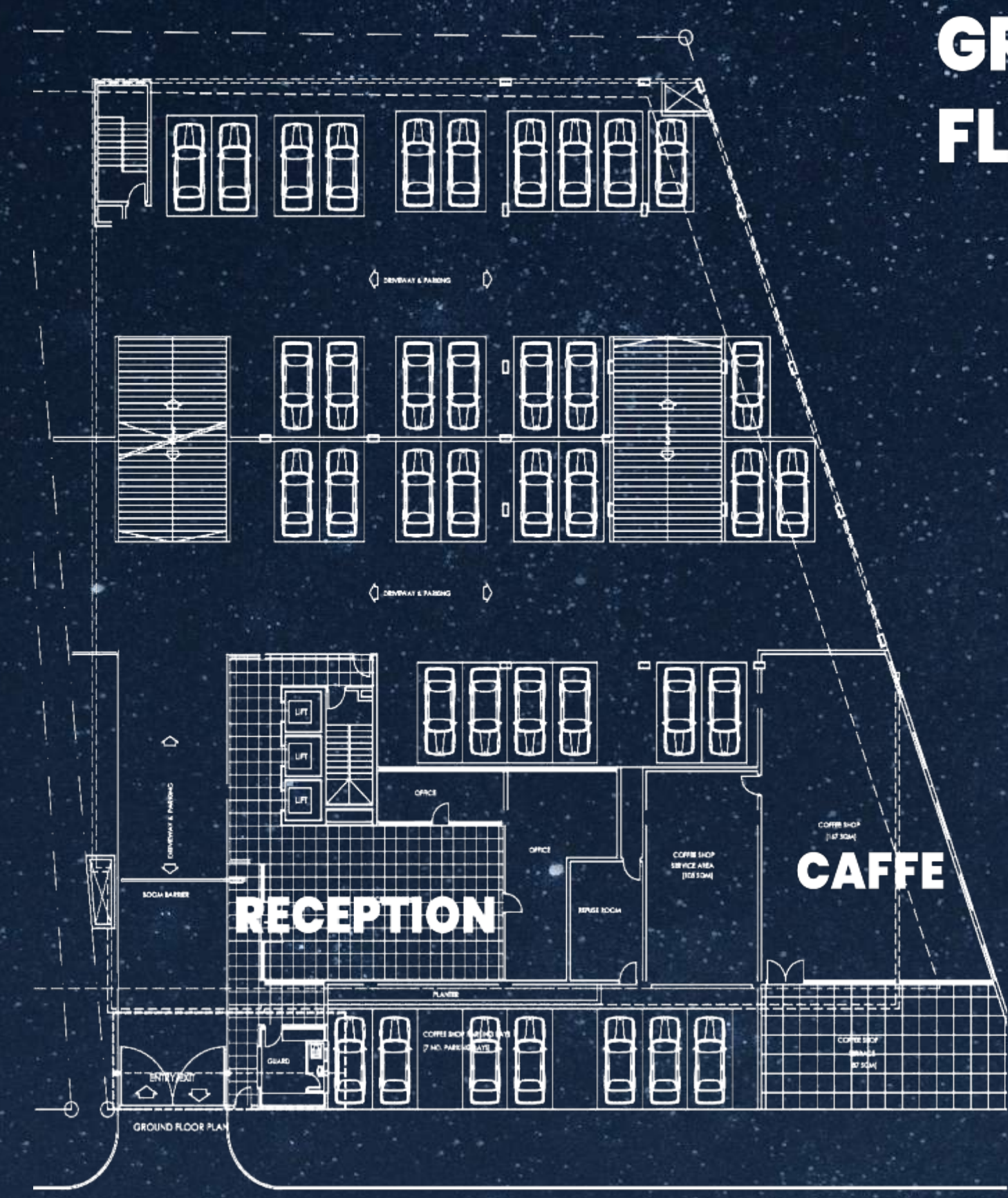




RECEPTION AND SOCIAL SPACES

Our welcoming reception sets the tone for refined living, offering a seamless blend of sophistication and warmth. For a more focused setting, the boardroom provides an inspiring environment where ideas come to life. Just beyond, the cozy café invites you to pause, savor a moment, and enjoy the familiar comforts of home.





GROUND FLOOR

UNMATCHED AMENITIES

Gemini's amenities offer the best. Within the courtyard, a serene pool, fountain, and garden provide a peaceful escape where mornings can start with a quiet swim or a stroll among the greenery. The fully equipped gym offers the perfect space to challenge yourself, while the yoga studio provides a calming retreat to find your center. After a productive day in the coworking space, unwind in the private cinema, or enjoy time with family in the children's play area. We give you the perfect balance between wellness and relaxation.







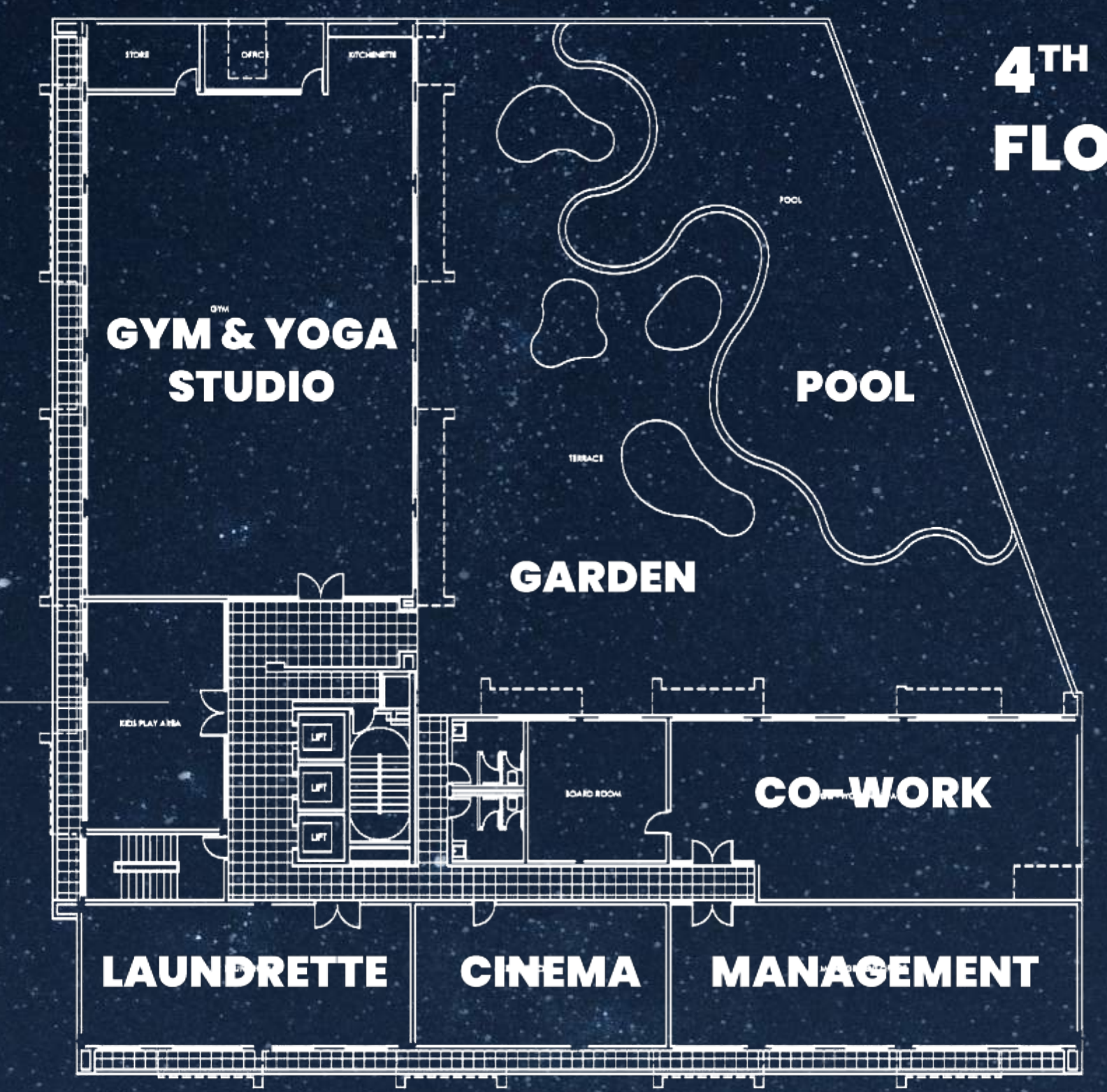


STAR
FIT





**KIDS
PLAY
AREA**





STELLAR 1 & 2 BED APARTMENTS

From the moment you step beyond the reception, you're led into a sanctuary of modern living. Each one and two-bedroom apartment is a masterclass in design, where every detail is crafted to elevate daily life. The spacious living room welcomes you with warm, natural light, flowing effortlessly into an open kitchen. The bedrooms offer a quiet retreat, designed for comfort and tranquility. Every corner is thoughtfully curated, combining elegance with an unmistakable sense of home.

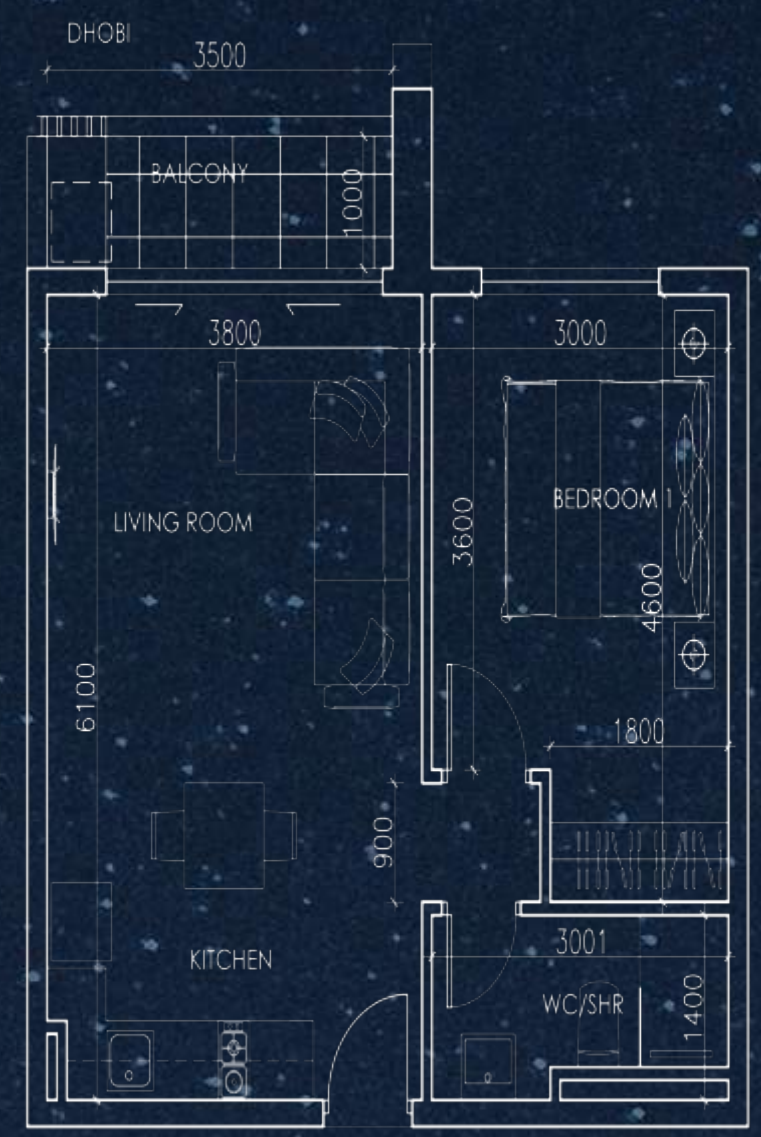






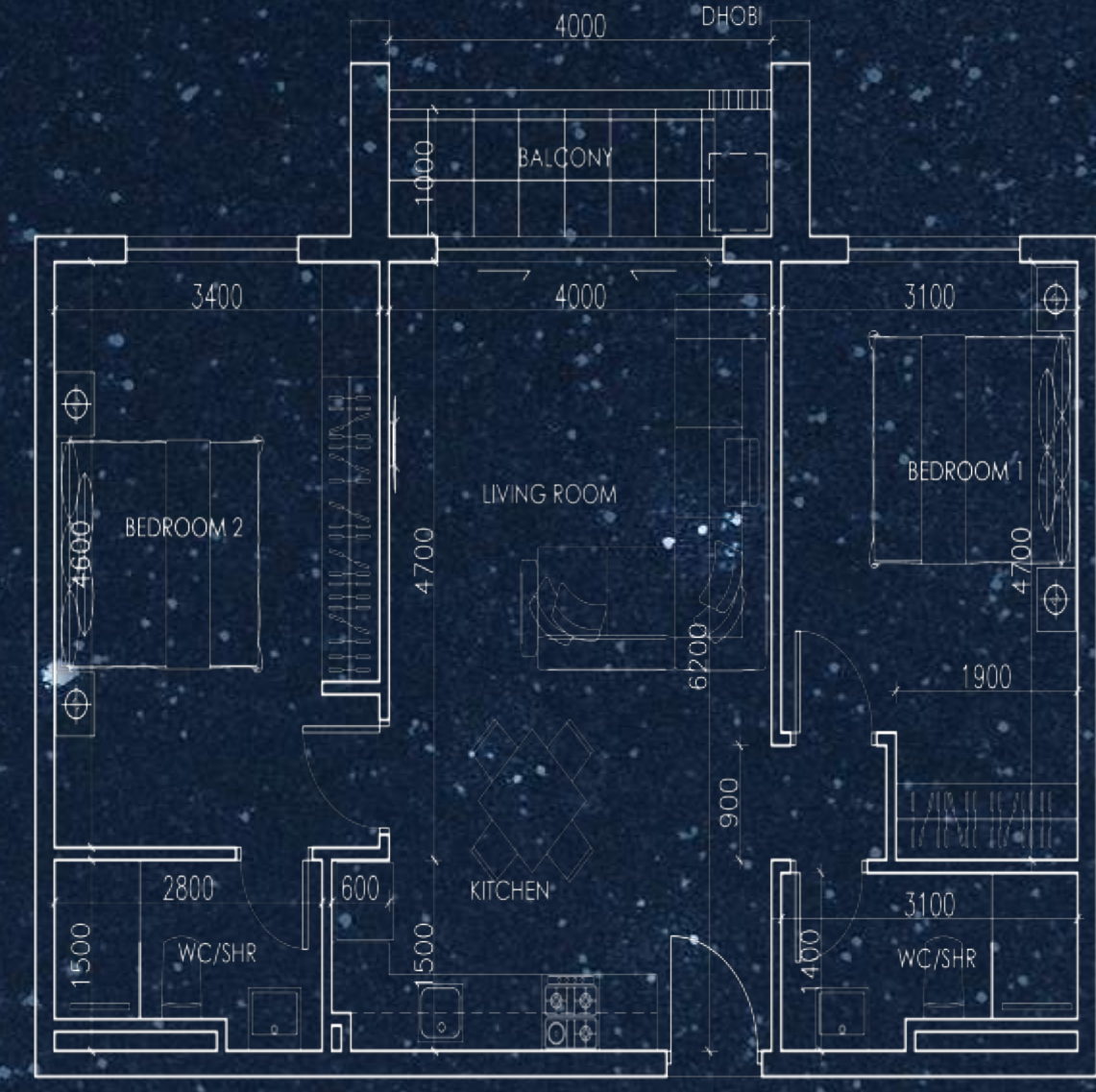
5 - 27TH FLOOR

ONE BED

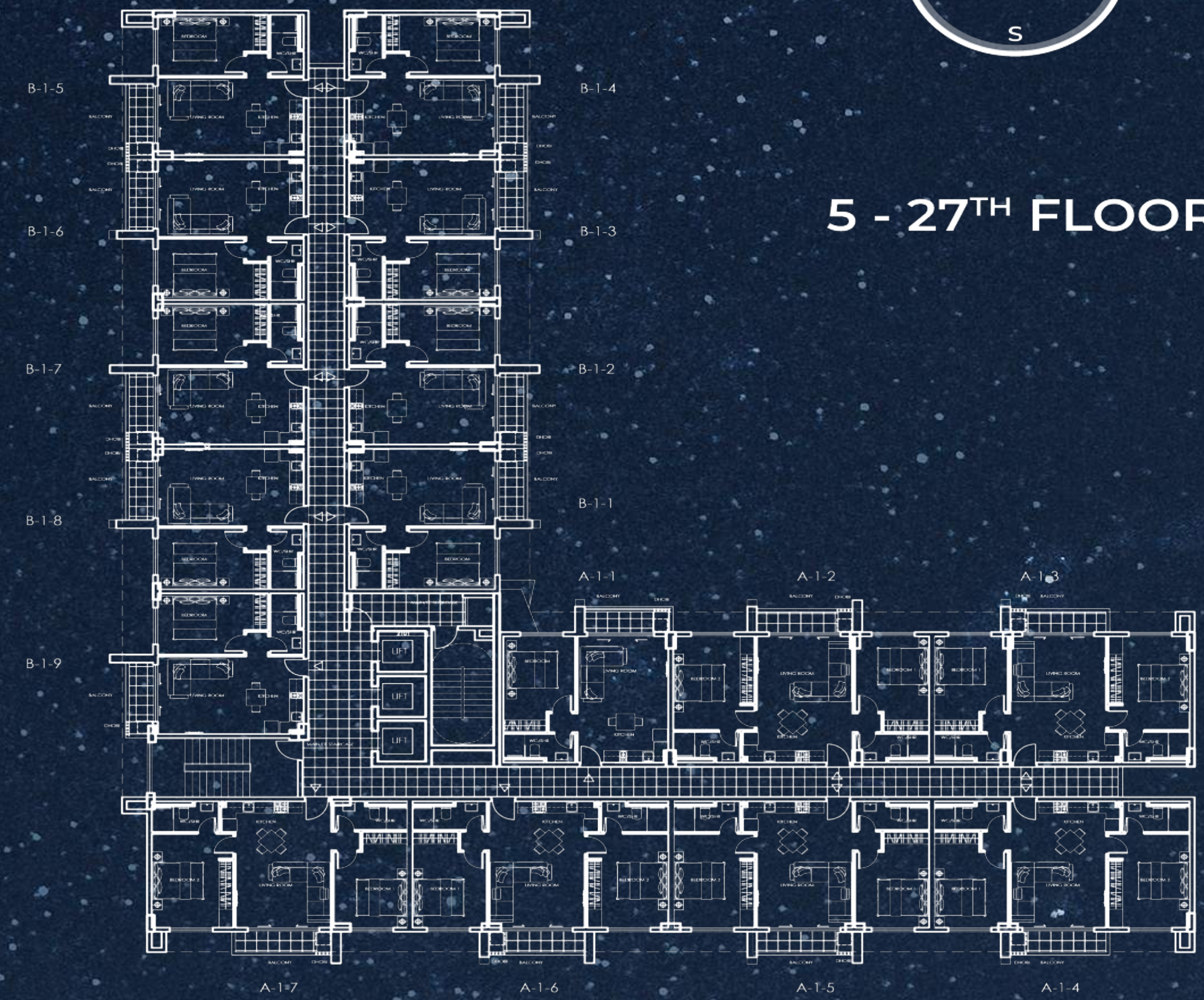


58 SQM

TWO BED



90 SQM



WESTLANDS' INVESTMENT HIGHLIGHTS

AVERAGE PRICE:	1&2-Bedroom apartments	16.5M KSH
ROI	Average return on Investment	11.2%
RENTAL RATES	Average monthly rental	125,000 KSH
GROWTH STATS	<ul style="list-style-type: none">• Rental growth (last 3 years)• Price growth (last 3 years)	12% 27%
AIRBNB OCCUPANCY	Average rate	72%

PAYMENT PLAN:

30% Deposit
50% During construction
20% On completion

ROOFTOP EXPERIENCE

Above the city skyline, Gemini's rooftop is a world of its own. It's a place where relaxation and entertainment come together under an open sky. The heated rooftop pool invites you for a dip, offering panoramic views of the city below, while the barbecue area sets the perfect scene for gatherings with friends. For those seeking a bit of sport, Kenya's first rooftop paddle court promises a one-of-a-kind experience, with breathtaking views. At the heart of it all, the bar and lounge offer a sophisticated space to unwind with a signature cocktail in hand. This is more than a rooftop; it's an elevated escape, where luxury knows no limits.

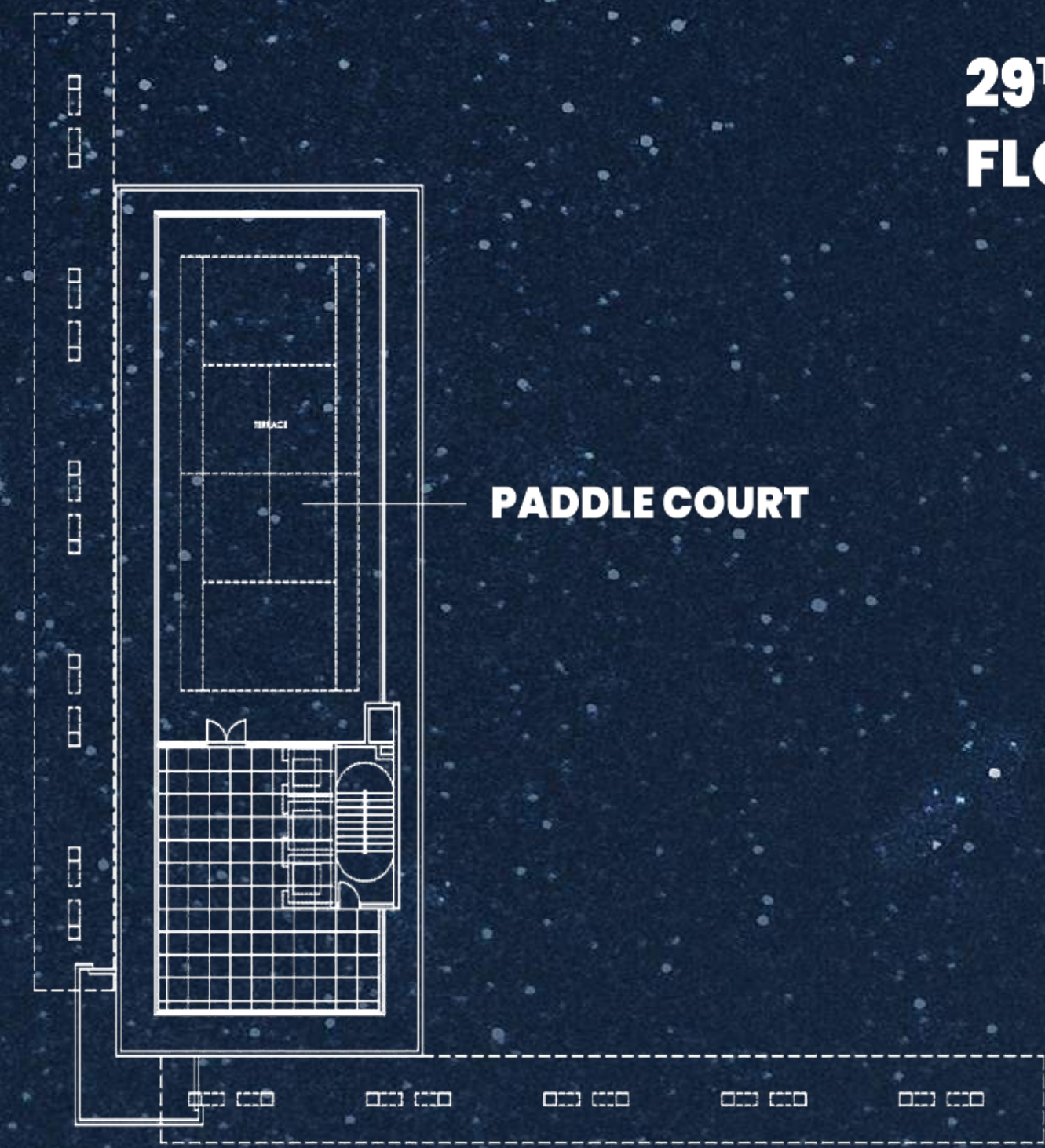
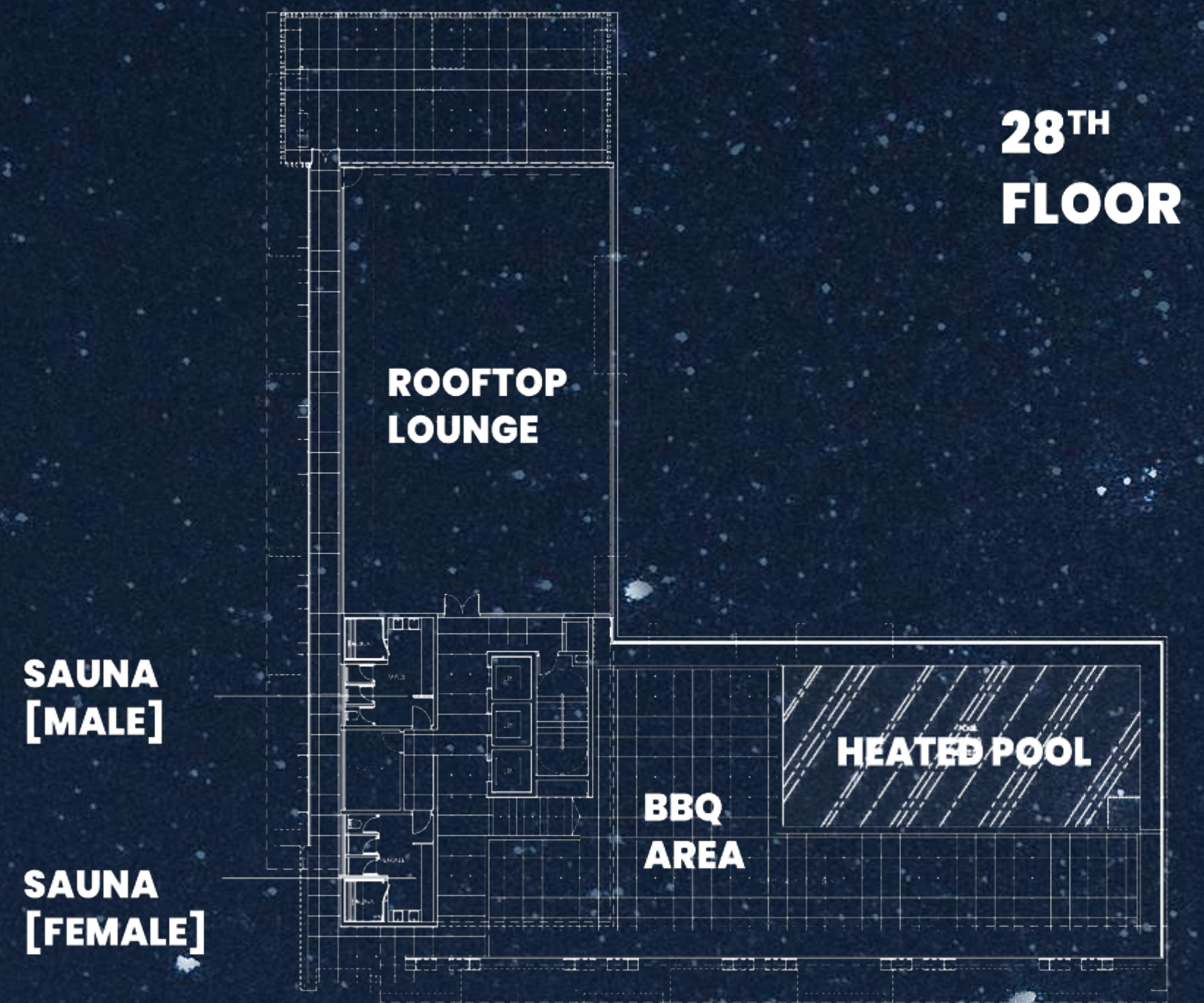








Introducing for the first time
in kenya,
The ultimate sky-high
paddel experience.





A NAIROBI LANDMARK
IN THE MAKING





NEIGHBORHOOD HIGHLIGHTS

- | | |
|----------------------|----------|
| 1. SARIT CENTRE | - 1.1 KM |
| 2. WESTGATE MALL | - 1.8 KM |
| 3. AGA KHAN HOSPITAL | - 4.4 KM |
| 4. KARURA FOREST | - 7 KM |
| 5. UNITED NATIONS | - 9.2 KM |
| 6. CBD | - 5.7 KM |
| 7. KILELESHWA | - 5.6 KM |
| 8. KILIMANI | - 6 KM |
| 9. LAVINGTON | - 6.7 KM |
| 10. GICIRI | - 9 KM |