



# GOLDEN STREET RESIDENCY

---

---



# GOLDEN STREET RESIDENCY





## GOLDEN STREET RESIDENCY

---

---

### GOLDEN STREET RESIDENCY

---

Golden Street Residency is a 17-floor development comprising spacious 2 and 3 bedroom apartments. It is ideally located in the heart of Kileleshwa along Nyeri Road, opposite to Holy Trinity Catholic Church Kileleshwa, just 10 minutes drive to several famous shopping centers, such as Yaya Center, Prestige Center, Kasuku Center, Lavington Mall and Quick-Mart Supermarket, where you can do serious shopping and have some nice food with your families or friends on weekends. With the Shell and Total Petrol stations scattered around, you can have a very nice time with your friends even in the evening, having a cup of coffee in ARTCAFFE, listening a relaxing music in a bar, and making your hair and nails in a saloon...nearby you can also find good education facilities like Kenya High School, St. Austin Academy and Kenton College. With public transportation stations right outside of the compound and well tarmacked roads, you can easily access to CBD, Riverside, Kilimani, Lavington and Westlands areas.

Common amenities include:

- \* Generator
- \* Borehole
- \* Electrical Fence
- \* DSTV and Intercom
- \* Fully Equipped Gym
- \* CCTV and Internet Provision
- \* Kids Play Area
- \* Manicured Garden



ENQUIRY HOT LINE

**+254 700165555 / +254 716701735**

GOLDEN STREET · KILELESHWA

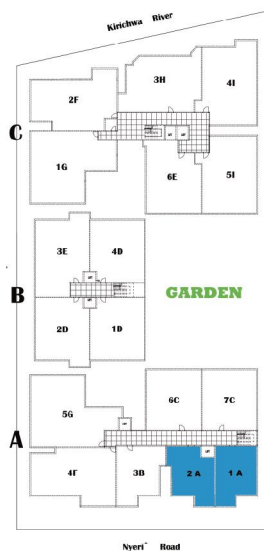
---



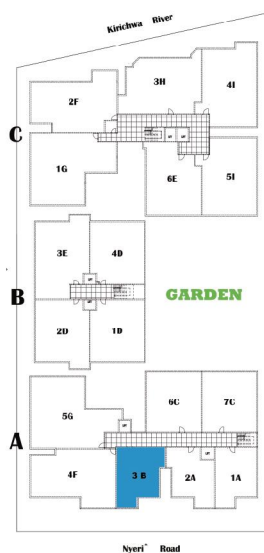
# GOLDEN STREET RESIDENCY



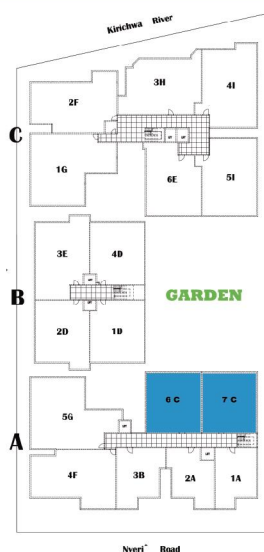
**A** | **TWO BED**  
90 m<sup>2</sup>, one washroom



**B** | **TWO BED**  
95 m<sup>2</sup>, two washrooms

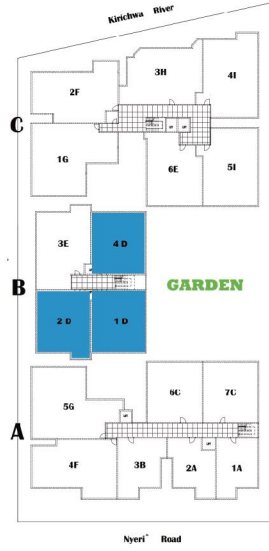


**C** | **TWO BED** all ensuite  
130 m<sup>2</sup>, three washrooms

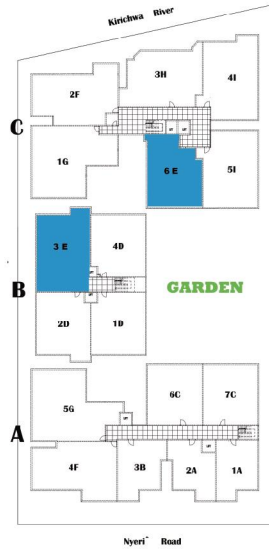




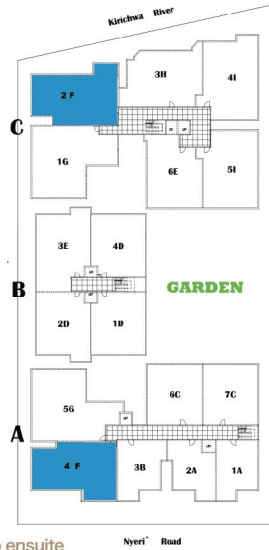
# GOLDEN STREET RESIDENCY



**D** | **TWO BED** all ensuite  
130 m<sup>2</sup>, three washroom



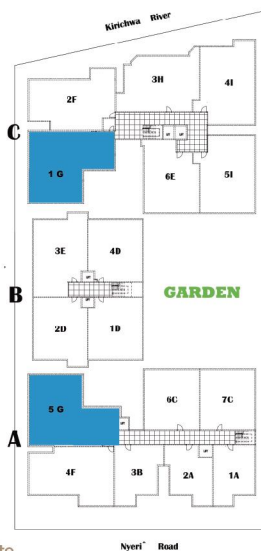
**E** | **TWO BED+DSQ** all ensuite  
145 m<sup>2</sup>, four washrooms



**F** | **THREE BED+STORE** two ensuite  
160 m<sup>2</sup>, three washrooms

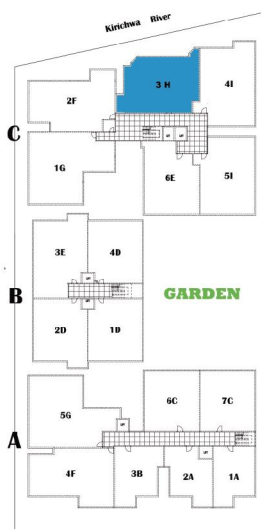


# GOLDEN STREET RESIDENCY



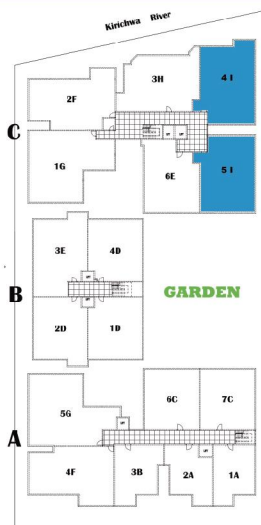
## G | THREE BED+DSQ all ensuite

190 m<sup>2</sup>, five washrooms



## H | THREE BED+STORE two ensuite

155 m<sup>2</sup>, three washrooms



## I | THREE BED+STORE all ensuite

160 m<sup>2</sup>, four washrooms



## GOLDEN STREET RESIDENCY



Conveniently located on Nyeri road, Kileleshwa, Nairobi

- \*opposite Holy Trinity Catholic Church
- \*3 minutes to Total Service Station & Art Caffe
- \*5 minutes to Lavington Curve & Lavington Mall
- \*5 Minutes to Quickmart Supermarket
- \*10 minutes to Yaya Centre
- \*15 minutes to Nairobi CBD

ENQUIRY HOT LINE

+254 700165555 / +254 716701735

GOLDEN STREET · KILELESHWA



## GOLDEN STREET RESIDENCY

---

---

---

### ABOUT US

---

We are an experienced and well reputed real estate company based in Kenya since 2005 and has delivered many successful projects since then, such as Mideya Gardens, Heartland Homes, Sunning Hills, Ever Home Gardens and Century Gardens, Gatundu Heights. Our aim is to provide affordable and comfortable housing for every one who needs it. All our apartments are always designed and planned with the client' s comfort in mind. The projects locations are carefully selected after a number of market researches have been done, to make sure our clients can enjoy convenient living and well returned renting.

**STAY WITH GOLDEN STREET**

**ENJOY A COMFORTABLE AND AFFORDABLE HOME!**

**STAY WITH GOLDEN STREET**

**FIND A STABLE AND PROFITABLE WAY OF INVESTMENT!**



ENQUIRY HOT LINE

**+254 700165555 / +254 716701735**

GOLDEN STREET · KILELESHWA

---



# GOLDEN STREET RESIDENCY

---

## SUCCESSFUL PROJECTS



MIDEYA GARDEN KILELESHWA  
2017.6-2019.8



CENTURY GARDENS  
2011.10-2013.2



NEW CENTURY GARDENS  
2013.2-2015.1



HEARTLAND HOME  
2020.2-2022.6



SUNNING HILLS KILELESHWA  
2007.6-2009.11



GATUNDU HEIGHTS  
2021.6-2023.12



MARCUS GARDENS  
2017.3-2019.6



NDEMI GARDENS  
2018.8-2020.6

ENQUIRY HOT LINE

+254 700165555 / +254 716701735

GOLDEN STREET · KILELESHWA

---